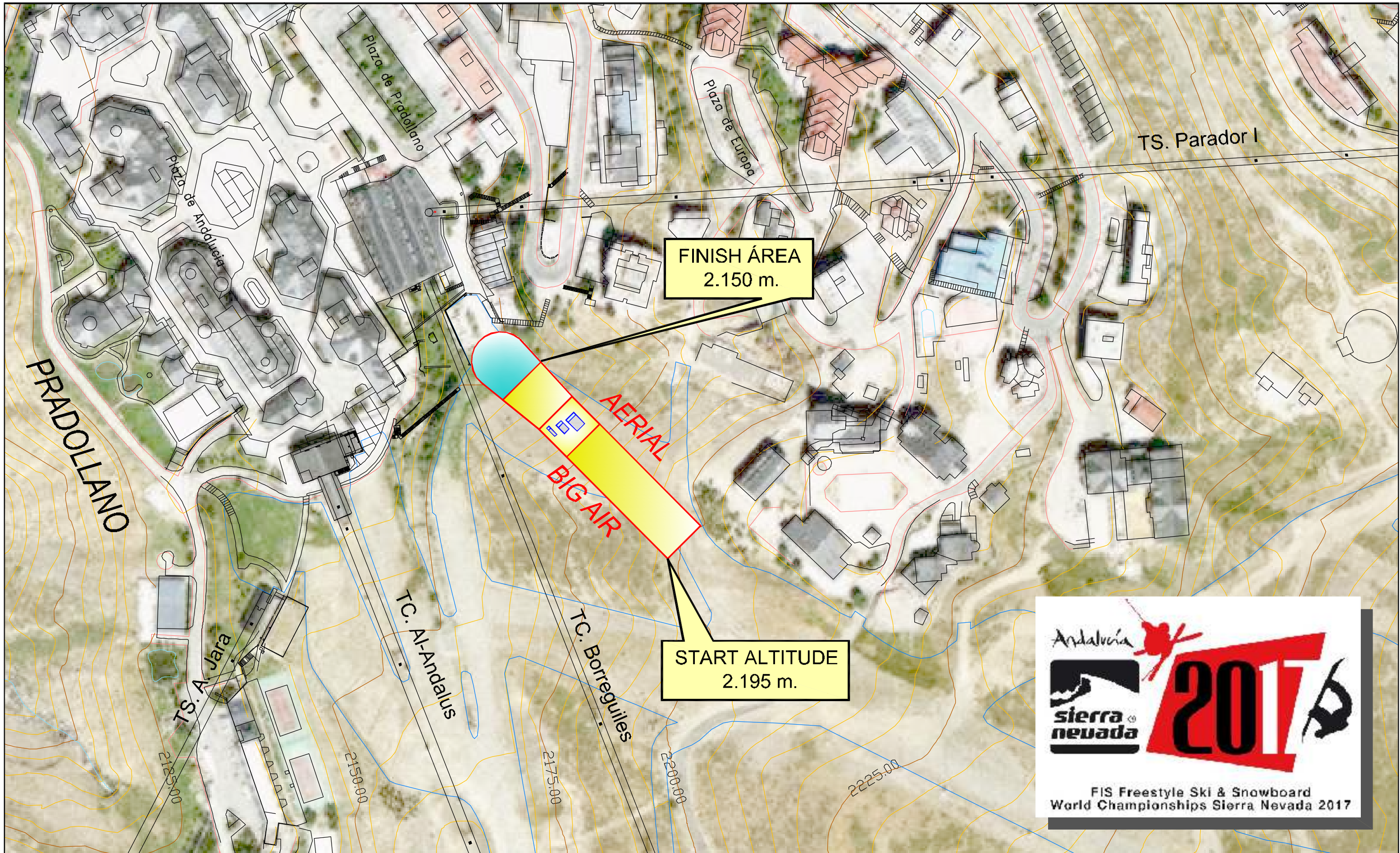


COMPETITION COURSES / PISTAS DE COMPETICIÓN



ESTACIÓN de ESQUÍ de SIERRA NEVADA
SIERRA NEVADA - T.M. MONACHIL - GRANADA - ESPAÑA

REALIZADO: Jorge Villén Gdmiz
FECHA EMISIÓN: MAYO 2014
COMPROBADO: M. Ruiz Jordán
FECHA REVISIÓN: MAYO 2014

PROYECTO: **CAMPEONATOS DEL MUNDO FIS
FREESTYLE SKI & SNOWBOARD SIERRA NEVADA 2017**

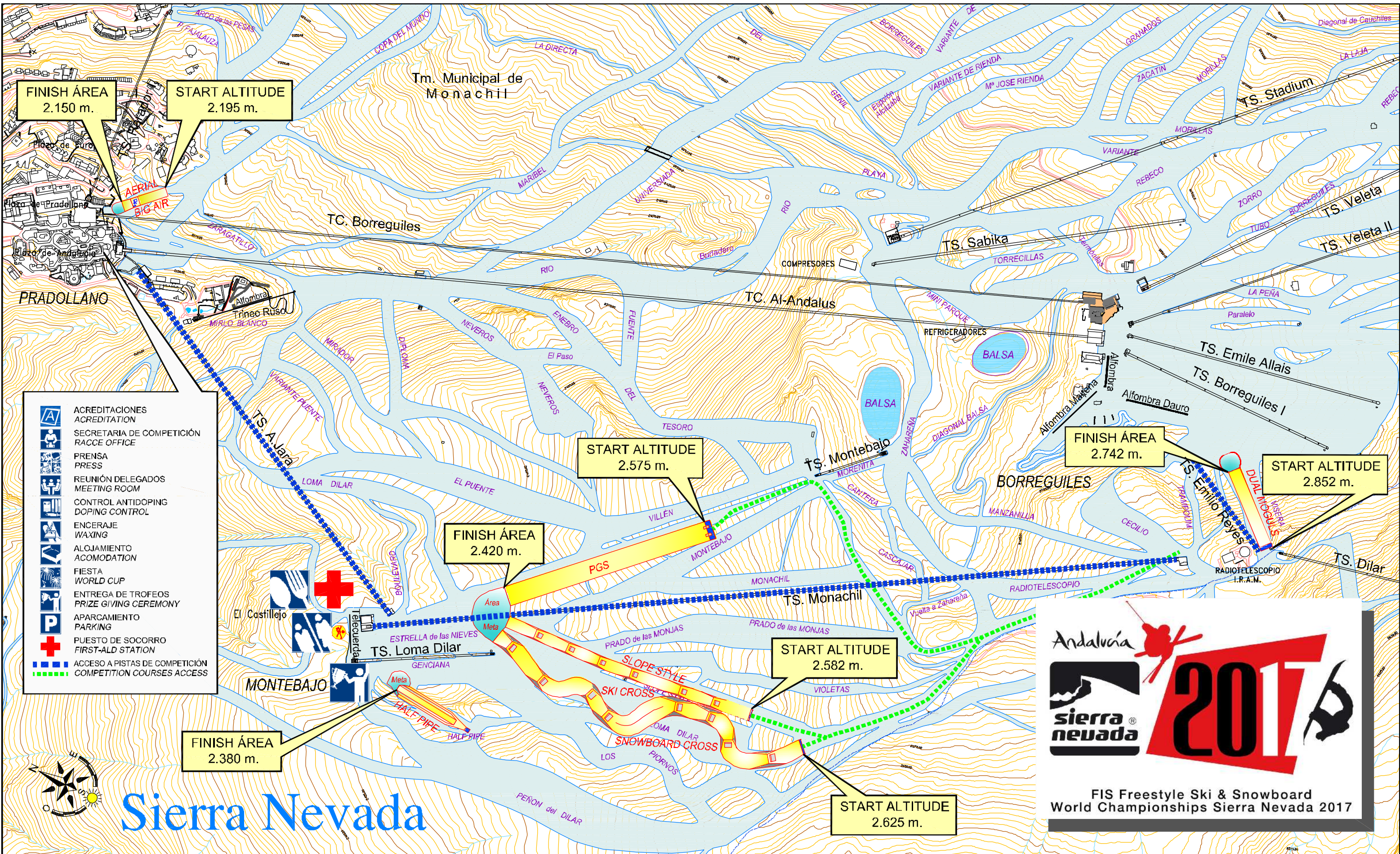
ESCALA: Escala Gráfica
0 50 100 200 300 400 metros.

PLANO: **AERIAL & BIG AIR
IMPLANTATION**

Nº PLANO: **15**

AREA TECNICA. DPTO: PROYECTOS, OBRAS Y MANTENIMIENTO
Este plano es propiedad de CETURSA SIERRA NEVADA S.A. No puede ser copiado reproducido o dado a conocer total o parcialmente a terceras personas sin nuestra autorización

COMPETITION COURSES / PISTAS DE COMPETICION



FINISH ÁREA
2.150 m.

START ALTITUDE
2.195 m.

START ALTITUDE
2.575 m.

FINISH ÁREA
2.742 m.

START ALTITUDE
2.852 m.

FINISH ÁREA
2.420 m.

START ALTITUDE
2.582 m.

FINISH ÁREA
2.380 m.

START ALTITUDE
2.625 m.

- ACREDITACIONES
ACREDITATION
- SECRETARIA DE COMPETICIÓN
RACCE OFFICE
- PRENSA
PRESS
- REUNIÓN DELEGADOS
MEETING ROOM
- CONTROL ANTIDOPING
DOPING CONTROL
- ENCERAJE
WAXING
- ALOJAMIENTO
ACOMODATION
- FIESTA
WORLD CUP
- ENTREGA DE TROFEOS
PRIZE GIVING CEREMONY
- APARCAMIENTO
PARKING
- PUESTO DE SOCORRO
FIRST-AID STATION
- ACCESO A PISTAS DE COMPETICIÓN
COMPETITION COURSES ACCESS



FIS Freestyle Ski & Snowboard
World Championships Sierra Nevada 2017

ESTACIÓN de ESQUÍ de SIERRA NEVADA
SIERRA NEVADA - T.M. MONACHIL - GRANADA - ESPAÑA

REALIZADO: Jorge Villén Gómiz
FECHA EMISIÓN: FEBRERO 2014

REVISADO: M. Ruiz Jordán
FECHA REVISIÓN: FEBRERO 2014

PROYECTO: **CAMPEONATOS DEL MUNDO FIS
FREESTYLE SKI & SNOWBOARD SIERRA NEVADA 2017**

ESCALA: 1: escala Grafica
0 50 100 200 300 400 metros.

PLANO: **COMPETITION COURSES
PISTAS DE COMPETICIÓN**

Nº PLANO: **3**

AREA TECNICA. DPTO: PROYECTOS, OBRAS Y MANTENIMIENTO CODIGO: C:/2017_CAMPEONATOS_PLANTA_3.DWG EXPEDIENTE: jvillen@cetursa.es 07_02_2014
Este plano es propiedad de CETURSA SIERRA NEVADA S.A. No puede ser copiado reproducido o dado a conocer total o parcialmente a terceras personas sin nuestra autorización

BROADCASTERS' MANUAL 2013/14

GENERAL

Contents

- Use of the Manual..... 4
- 1. Objectives..... 5
 - 1.1 Role of Television..... 5
 - 1.2 Principle points of contact and Division of Obligations 7
 - 1.3 Broadcast Planning Survey 10
 - 1.4 Documentation Required Pre-Survey 15
 - 1.5 Documentation Following Survey 15
 - 1.6 Media Agent Liaison with HB and Media Rights Holders 16
- 2. Television Production 17
 - 2.1 General..... 17
 - 2.2 High Definition Technical Specification 17
 - 2.3 Audio Specification 17
 - 2.4 Satellite Uplink Specification and Distribution 17
 - 2.5 Power supply 17
- 3. Multilateral TV Production Considerations 18
 - 3.1 Production Standards..... 18
 - 3.2 Technical Infrastructure..... 19
 - 3.3 Cabling..... 19
 - 3.4 TV Compound..... 20
 - 3.5 Lighting Installation 20
 - 3.6 Transition Replay Animation 20
 - 3.7 Use of Specialty Cameras and Handhelds 21
 - 3.8 Record and Replay Devices 21
 - 3.9 Photo Finish 21
 - 3.10 Audio Considerations 21
 - 3.11 Use of music..... 22
 - 3.12 Podium Presentation 22
- 4. Unilateral TV Requests 22
 - 4.1 Unilateral Broadcaster Request Booking Details 22
 - 4.2 Commentary Booths 24
 - 4.3 Mixed Zone and Flash Interviews..... 24
 - 4.4 Pre and Post Unilateral Transmissions 26
 - 4.5 TV Interviews during the Live Transmission of the Event..... 26

4.6 Studio and In-vision Positions	26
4.7 ENG Crews	26
5. Accreditation and Supplementary Access Devices	26
5.1 Accreditation	26
5.2 Camera Stickers.....	27
5.3 Operator Bibs.....	28
5.4 Vehicle Access Passes	29
6. Venue Logistics	29
6.1 Logistics.....	29
6.2 Starting Time.....	29
6.3 Venue/Region Information	30
7. Event Operations.....	30
7.1 Definition of Roles and Contributors	30
7.2 Contingency	33
7.3 Competition Communication	33
7.4 Public Address System	33
8. Event Phase.....	33
8.1 Run up to the first TX commitment.....	33
8.2 Camera Production Test and Rehearsal.....	34
8.3 Daily Call Sheets.....	35
9. Advertising Considerations	36
9.1 Advertising Considerations.....	36
9.2 FIS Advertising Rules.....	36
9.3 FIS Marketing Guide.....	36
9.4 Advertising Check	37
9.5 Placement of Advertising Banners in the Competition Area	37
10. Graphics Data and Timing.....	37
10.1 FIS Graphics, Data and Timing Partner	37
11. TV Ratings.....	39
12. Glossary of Terms.....	39

Use of the Manual

As the international organisation responsible for the promotion and development of skiing, FIS is constantly looking to find new ways of increasing interest in all of the FIS disciplines.

The starting point in this endeavour is to ensure that the events in the FIS calendar are organised to the highest level by granting the responsibility to Organising Committees which understand the sport and are willing to invest in creating the best environment for athletes, officials, media, sponsors and spectators. The guarantee of high quality events involving the best athletes competing in the most attractive environment is an essential platform for coverage through the electronic media, which is the means to reach and attract the largest number of people.

This manual offers carefully prepared guidelines for both Organising Committees and Host Broadcasters to ensure the delivery of exceptional and consistent standards of television production throughout the calendar season. The manual is intended to provide the parties with the best possible platform to launch the necessary planning and final delivery of first class skiing events for the international television audience.

In the preparation and planning of events in the different disciplines there are a large number of common elements. For this reason, the manual has been designed with a number of sections. In the first section of the manual general information and explanations affecting all disciplines are provided, elaborating the vital planning phases of any given event, while outlining the division of responsibilities between all contributing parties. Where possible photo examples, drawings and illustrations have been added to complement the text and many examples have been included that broadcasters are advised to follow.

This core text is supplemented by appendices relating to the individual FIS disciplines. These include the competitions and their formats, coverage philosophy, production planning, television running orders, on-screen graphics with timing and data presentation, examples of venue layouts, camera plans and broadcast installations.

This manual is intended to be a portable and quick reference publication that accompanies skiing production of the different disciplines both in the development stages and during the competition phase of the event.

It is recognised that the world of sport and electronic media is constantly changing, and regular updates and modifications to this document can be expected, as required by the individual discipline and technological developments

This Broadcast Manual was produced jointly by FIS and Infront.

Should you have any questions about the use of this manual please contact the persons given in the discipline specific annexes:

FIS International Ski Federation
Marcel Looze
3653 Oberhofen (Switzerland)
Tel: +41 33 244 6161
@: looze@fis-ski.com
www.fis-ski.com

1. Objectives

1.1 Role of Television

Television is an essential publicity tool for competitive sports competition and is a vital component of the marketing concept. The Host Broadcaster (HB) is responsible for the delivery of a high quality international television broadcast in close partnership with the Organising Committee (OC) and the International Ski Federation (FIS). The appointed FIS TV Supervisor will aid and assist the planning process and support the delivery of the production plan.

FIS Broadcast partners who have purchased the TV and/or media rights to FIS events are identified in this manual as Rights Holding Broadcasters (RHB's).

As a general rule, FIS aims to present a clear and concise division of responsibility with regard to the successful broadcast of a FIS World Cup or World Championship competition. The OC or the National Ski Association (NSA) of the host country will deliver the competition, including providing much of the physical infrastructure that will benefit both the HB and attending RHB's.

Perhaps the single most important objective for all HB's is to deliver a consistent and high level standard of production across all competitions throughout all participating host nations during the calendar season. The FIS presents simple guidelines for Host Broadcasters to follow which can be summarised as follows:

- Deliver a live complete and continuous High Definition international world feed to attending and non-attending RHB's, with opening titles, a complete graphics service (provided by FIS data and timing partner), international stereo sound and closing animation. A written and prepared format will be followed for pre and post-race programming including specific procedures for the podium ceremony and post-race formalities. The running order will include information on the venue and the sporting arena, be it an alpine, cross country, freestyle or snowboard course, or the profile of a jumping hill. The final phase of the running order will include an animation that informs the viewer of the next competition venue on the FIS World Cup calendar for the discipline
- The HB will produce the events in an unbiased and professional manner
- Offer the television audience exceptional coverage of the action that is likely to appeal to existing fans and stimulate growth in emerging markets
- Follow the drama inherent in the competition by using a variety of camera techniques, including appropriate use of replays together with an exciting audio experience
- Offer modern and innovative enhancements and speciality camera devices that will complement the overall viewing experience
- Include post-race formalities as a high priority in the coverage plan including athletes reactions, the flower ceremony and athlete interviews featured in the multilateral feed
- RHB's are encouraged to customise their programming by attending the event and sharing the space and infrastructure in the TV Compound. The appointed Host Broadcasters are expected to liaise and support the needs of visiting broadcasters

The importance of 'insightful, informed and editorially credible storytelling through appropriate shot selection and replay options' remain a key priority for all host broadcasters. HB's must follow the examples of the multilateral running order for the different competitions provided in the relevant annex to this manual.

The preparation and delivery of the production plan must be regarded as the most demanding of challenges, but equally the HB must also consider the likelihood of providing support services to unilateral broadcasters, TV Compound logistics, cabling, broadcast management and technical assistance.

Facilities may include the supply and installation of the commentary booth equipment, tailboard connection to unilateral broadcasters' facilities and perhaps the supply of broadcast facilities to an attending rights holder.

The OC will be responsible for the supply and installation of the necessary cables to interface with FIS' data and timing service partner, although typically the Host Broadcaster will assist with this task, providing that the distances are reasonable and within the confines of the TV compound. The site survey will seek a suitable and convenient position for the Data and Timing Partner's technical facilities.

HB's and RHB's are invited to develop suitable production ideas that best illustrate the competition dynamic, capture the athletes' experience and offer performance comparisons in a way that will inform and appeal to both fanatics and new audiences.

The designated TV Compound should be designed and prepared well in advance of the competition with respect to occupation by both the host broadcast operation and unilateral broadcasters. These obligations may vary on a case-by-case basis and specific guidelines for each race venue will be made available to the respective HB and the OC.

Host Broadcasters are expected to design a suitable time frame in advance of each competition to fully prepare their broadcast installation. The schedule should consider the possibility of conducting a full technical and production rehearsal (with timing and a podium presentation) at least one day before the actual competition.

The organisation of the technical and production rehearsal will be carefully planned with the Organising Committee.

1.2 Principle points of contact and Division of Obligations

In order to successfully host and deliver a FIS World Cup Skiing event, the FIS works closely with the local Organising Committee and the National Skiing Association (NSA) who will introduce key members of their planning and event delivery team months in advance of each competition. In summary FIS contact with the key members of the Organising Committee, NSA and the appointed host broadcaster can be presented as follows:

Organising Committee / NSA	FIS Representatives
President Organising Committee and General Secretary	FIS Race Director
OC Appointed Host Broadcaster	FIS Event Coordinator
OC Principal HB Contact	FIS Media and PR Coordinator
Chief of Stadium/Track	FIS TV Supervisor
Chief of Ceremony	Appointed Media Agent – TV and Media Rights Manager (TVM)
Press Manager/Media Centre	Appointed Data and Timing Services Provider
Logistics Contacts (accreditation, transport and accommodation)	FIS Technical Delegate

DIVISION OF OBLIGATIONS TABLE

	FIS	FIS TV Supervisor	National Skiing Association (NSA)	Local Organising Committee (OC)	Host Broadcaster (HB)	NSA / LOC Commercial Partner
Definition	<p>The federation is the main international organisation of ski sports and has a membership of 115 National Ski Associations. It is responsible for organising the calendar for competitions in all disciplines including the different FIS World Ski Championships every two years.</p> <p>The FIS also controls competitive ski racing by enforcing a set of rules which prevents any skier from having an advantage over another.</p>	<p>The FIS TV Supervisor (TVS) is responsible for monitoring the standard of TV Production and consistency from all participating venues throughout the calendar season.</p> <p>The TVS will assist host broadcasters with the necessary planning, development and documentation of their event and be associated to the project from the planning stage through to the final transmission days.</p>	<p>Is the national governing body for all skiing disciplines, providing direction and leadership for athletes from member clubs. The NSA is responsible for all aspects of competitive skiing from grassroots programmes through to the training and selection of the national team.</p> <p>Each NSA is responsible for planning and delivering competitive ski races as part of the annual commitment to the seasonal FIS calendar.</p>	<p>Each NSA will appoint a local organising committee to plan, build and manage the infrastructure required to deliver a major international skiing competition.</p> <p>The OC is expected to nominate a suitable contact for the benefit of the Host Broadcaster.</p> <p>This contact will aid and assist the HB's planning and installation of broadcast equipment at the competition venue</p>	<p>Is the appointed local or national broadcasting organisation that is responsible for the television production of the event. This may also be an independent television production company.</p> <p>The host broadcaster's coverage is produced and formatted in a way that accommodates the international broadcast rights holder, i.e. the video signal does not feature any in vision presentation and the audio signal is available as a clean effects mix only.</p>	<p>For selected events in the FIS calendar, the commercial partner represents the NSA and/or LOC by managing the domestic and international media and marketing rights. A designated TV and Media Rights Manager will attend each event (TVM)</p>
TV Planning Survey	<p>The FIS Chief race director is the most senior official at any FIS event and will attend the venue planning surveys.</p>	<p>The TVS will make a vital contribution to the panning survey, providing advice and guidelines regarding camera positioning, timing and measurement locations and the overall broadcast infrastructure.</p>		<p>A representative of the LOC should attend the TV planning surveys and note the necessary transport infrastructure required to support the rigging and installation process. Working closely with the HB and the FIS Race director, all aspects of the competition site are determined including the position of the start and finish areas, timing and measurement points, commentary tribune, timing room, mixed zone, TV compound, and all associated offices.</p>	<p>The TV producer, director and senior crew representatives, together with the FIS Staff, FIS TV Supervisor and a representative(s) from the OC will conduct a TV planning survey. The HB will produce a report documenting the results of the survey and submit to all attending parties. Designated camera positions and scaffold towers will require the approval of the FIS Race director.</p>	<p>The TVM will ensure that the documentation that is produced following the survey accommodates the needs of attending commentary teams and rights holding broadcasters.</p>
Safety	<p>The FIS Race director will examine all relevant safety requirements including camera towers and positions around the course.</p>	<p>The TVS will assist the FIS Staff by ensuring all broadcast devices, facilities, apparatus and cable installations meet the necessary health and safety standards as defined by each host nation.</p>		<p>The OC must deliver a competition site that respects the safety of athletes, staff and spectators.</p>	<p>The HB is expected to deliver a production plan which meets relevant FIS Safety guidelines, as well as their own safety procedures on the competition venue and within the TV compound. In certain nations the HB must be prepared to submit their risk assessment report.</p>	<p>The appointed commercial partner responsible for course advertising sales must respect the safety guidelines regarding advertising stands and inflatables.</p>
Broadcast Installation		<p>The TVS will ensure that the relevant documentation has been produced and distributed in order to coordinate and implement the broadcast installation according to an agreed timeframe.</p>		<p>Provides the necessary access to the camera and microphone positions including the use of snowmobiles, as well as supplying a safe and reliable technical power supply for the host broadcaster and attending RHB's.</p> <p>The OC must be responsible for the supply and installation of cable bridges, conduits, ducts and cable paths for the benefit of a safe and discreet cable installation.</p>	<p>The host broadcaster supplies as part of its agreement protective winter clothing for all crew and personnel including skis, boots and gloves.</p> <p>The host broadcaster will be responsible for the safe and discreet installation of cables within the confines of the TV compound including the use of cable ties and yellow jackets.</p>	<p>The position of advertising banners and stands corresponds to the intended camera plan.</p>

	FIS	FIS TV Supervisor	National Skiing Association (NSA)	Local Organising Committee (LOC)	Host Broadcaster (HB)	NSA / LOC Commercial Partner
Mixed zone	The FIS nominates a TV liaison coordinator to manage the mixed zone. In some cases this will involve a number of staff.	The TVS will assist host broadcasters with the planning, coordination and management of the mixed zone		Supplies and installs the action area, mixed zone podium position and necessary daylight colour temperature lighting. Also provides all of the necessary supplementary access devices to operate within the Mixed Zone.	The HB provides a bookable cabled camera unit with operator as part of its installation in the mixed zone for use by attending rights holders.	Depending on the contractual situation, the commercial partner administers the booking requests for pre-and post-unilateral services.
Logistics/space	.	The TVS will assist the host broadcaster in establishing the specific requirements for RHB's, including Commentary Booths. The FIS Production Guidelines indicate the minimum physical requirements and the data and timing service provider will supply a data feed monitor free of charge to each commentary booth.		Provides the necessary space for the TV compound operation mixed zone, commentary tribune, timing room and TV studios including security during the competitions phase of the event. The LOC shall also provide the necessary number of furnished and heated commentary booths for unilateral broadcasters to rent. In some cases both the physical booths and facilities within them may be supplied by the commercial partner.	The HB must provide accurate drawings of the TV compound space with relevant dimensions of each vehicle (including expanding sides). Regarding commentary booths the HB or commercial partner will be invited to supply the necessary number of equipped or partially equipped commentary booths with a duty technician available during the competitions phase of the event.	The HB or commercial partner will be invited to supply the necessary number of equipped or partially equipped commentary booths with a duty technician available during the competition phase of the event.
Data and timing	The FIS will appoint a data and timing service provider to supply the FIS TV graphics presentation in the English language for the international feed.	The TVS will provide relevant information to the HB		The LOC will provide a data and timing room for use by service provider including necessary lighting, furniture and protected power supply.	The HB will install the necessary cables, sync reference and programme monitor to the service provider according to a documented request.	
Broadcast Uplink	The FIS shall update the host broadcaster and the commercial partner regarding any likely changes to the competition schedule due to poor weather or unexpected delay.	The TVS will assist the HB in establishing the final timings and satellite requirements including those for pre-and post unilaterals.		The LOC shall ensure a suitable position is available for uplink facilities, identified at the site survey.	The host broadcaster shall supply and install the necessary cabling to connect the international programme output to the uplink facilities.	The commercial partner is responsible for the supply and management of the International signal distribution, including all updates.

NB: The FIS TV Supervisor works under the guidance and authority of the Race Director responsible for each discipline.

1.3 Broadcast Planning Survey

For host locations that are established and existing competition venues, a planning meeting must be conducted in good time in advance of the event, with the FIS staff together with the assigned FIS TV Supervisor, the responsible TV Director and TV Producer of the HB (and members of their production team) and a representative of the marketing partner as appropriate. Representatives of the OC are expected to host the survey and may invite an advertising agent who has been appointed to sell available advertising space.

Each person contributing to the survey should not underestimate the time required to inspect the venue and assess the range of television requirements. Depending on the discipline, the survey will also identify the crucial points along the course and at the venue that will influence the television production.

For cross country, ski cross and snowboard cross competitions the actual design and selection of the course may be influenced by the television director, and certainly this is the case for new course designs so they can be best arranged for the aesthetic and logistical demands of the television coverage plan.

Each event may include a programme of competitions scheduled to take place over a number of days. The planning survey must consider any possible reset times between course lengths and race disciplines. In some cases, camera re-positioning may need to take place during the race itself and the additional cable paths and access logistics must be considered during the planning survey.

In summary FIS recognises the role of both TV Producer/Editor and Director to be defined as follows:

TV PRODUCER/PROGRAMME EDITOR JOB DESCRIPTION

- Overall operational responsibility for the Host Broadcaster's Multilateral Feed, in particular observing the 'story telling' requirements for any given race
- First and principal point of contact for all activities relating to the host broadcaster, including accommodating the needs of unilateral broadcasters, and facility requests
- Senior Operational Partner of the FIS Race Director/OC/Marketing Agencies
- Content handling of timing data and graphics
- TV Operational Consultant for all departmental supervisors

TV DIRECTOR JOB DESCRIPTION

- Delivering a programme that faithfully represents the producer's editorial decisions
- Positioning, handling and directing all broadcast devices on the course
- Directing and delivering the multilateral feed according to documented guidelines

In some cases, the TV Producer and Director may choose to attend an initial survey alone (say the day before the main survey with a member of the OC) to fully establish his/her initial production plan without the opinions of a large survey team.

A key principle for the TV Director and FIS Race Director is to remember they are providing multilateral feed coverage and this should be unbiased in order to satisfy the international viewing audience. Coverage should be impartial, with equal emphasis on all participants, including replays of their reactions. Live action should always be a priority, and quite often the best approach is to 'keep things simple'. At the same time, one of the most important assets of the designated TV Director and TV Producer will normally be considerable knowledge of the sport. This knowledge will significantly contribute to how the excitement of the competition can be captured, showing all the important parts of the venue and the development of the competition.

The HB Producer and Director are expected to study the form and performance of the athletes participating in the competition. Familiarity not only with the subject, but also with the season performance is imperative to fully understand and exploit the strengths and weaknesses of athletes in the coverage plan. This type of research may include recent recovery from injury, a change in tactical approach or the rising form of a new athlete whose style is eye catching and entertaining. This knowledge will aid the necessary preparation for the members of the production team who can be given specific instructions to identify particular athletes.

The technical purpose of the survey is to develop the camera plan, microphone positions and cable path routing. The survey also presents the best opportunity to identify the TV Compound layout, space to meet the unilateral facility requirements of RHB's, accreditation and access. The race dynamics can be discussed in terms of the competition venue layout as well as the position and operation of the Mixed Zone, podium, lighting considerations, commentary booths, data and timing service provider and all associated logistics such as power supply, parking, catering and security.

In summary and as a minimum requirement the HB is expected to nominate the following individuals to attend the survey:

- TV Producer/Senior Project Manager
- TV Director
- Chief Technical Manager/Technical Producer

Depending on the venue and the event to be produced the following specialists may also attend the survey:

- Senior Cameraman (also cable rig supervisor)
- Production Manager
- Audio Supervisor
- RF Engineer
- Lighting Supervisor (Night races only)

It is essential that each member of the survey team can make confident and clear decisions that will affect the planning and execution of the broadcast product. Things may and will change but at least the survey report is detailed, factual and concise.

Another important purpose of the TV planning survey is to establish the position of the Mixed Zone and podium position beside the Finish Area. FIS will provide a Media and PR Manager and with the appointed TVM will manage the Mixed Zone and follow the guidelines and schedule determined for pre and post-race procedures.

The FIS Race Director and Event Coordinator must be invited to the official planning survey or at the very least receive the site survey report documentation following the inspection. For new venues a FIS appointed Homologation Inspector will attend in order to approve the strict standards required to host a FIS Skiing competition.

Following each survey the HB is expected to distribute a detailed camera plan (indicating how each camera will be used) and a schedule detailing the activities during the final days of preparation before the event. The OC will distribute plans of the competition site including the competition offices, TV Compound, mixed zone, podium position, commentary positions and all the logistical considerations such as parking, catering and team facilities.

TV planning surveys for new competition venue locations will require a more detailed and strategic planning approach in order to examine carefully the physical attributes of the venue and identify any special construction needs, safety considerations, access and consideration of the likely TV production plan. An experienced TV Producer/Director can provide a vital contribution to the design and layout of all new competition venues.

An example of the site survey considerations are summarised below:

Description	Action Required
<p><u>Venue(s) Infrastructure</u> with the OC, FIS Staff and HB TV Producer</p> <p><u>Camera Positions</u> carefully considered with respect to the way the story of the competition is to be told</p> <p>Air fences and protection of camera platforms to be provided by LOC</p> <p><u>Flash Interview position with backdrop and lighting</u></p> <p><u>Scaffold towers or Platforms</u> The likely position and height of towers or platforms with respect to the competition and expected weather conditions</p>	<p>The OC will initially provide the venue drawings and prepare a profile which may be included in the camera plans</p> <p>Following the survey the HB will distribute the camera plan drawings of the competition venue to include microphone positions and all timing points.</p> <p>HB to identify locations and determine level of protection required</p> <p>To be agreed with the HB</p> <p>To be agreed with the HB</p>
<p><u>Strategic Features</u> Define the locations of any specific features to be included in the coverage</p>	<p>As discussed with FIS Staff, FIS TV Supervisor and the HB to ensure suitable coverage is provided at strategic parts of the competition venue.</p>
<p><u>Finish Area</u> Define the finish line position and identify the relevant zones around the finish line, including the mixed zone and podium position</p> <p><u>Venue Public Address System</u> The PA system should not interfere with the international programme audio and the reporting/broadcasting activities taking place in the mixed zone or in the commentary booths.</p>	<p>The OC to distribute a map of the mixed zone area showing all of the different areas related to sporting and media activity depending on the discipline.</p> <p>The placing of loudspeakers to be coordinated with the HB</p>
<p><u>Race Leader's Position/Throne</u> Where used, identify the space for the leader position and/or the throne</p>	<p>HB to include a hand held camera in coverage plan for this feature</p>
<p><u>TV Compound Location</u> Establish a suitable space (as close as possible to the stadium area) and identify the most suitable position for satellite uplink vehicles Particular attention to the arrivals and parking schedule must be noted</p>	<p>HB to design and distribute a TV Compound layout including the positions of any unilateral rights holders, tender trucks and uplink vehicles</p>

Description	Action Required
<p><u>Cable Paths</u> Around competition venue and within the TV Compound</p>	<p>The HB will study the likely cable path runs around the competition venue and the delivery of cables in and out of the TV compound. A cable bridge may be necessary. In some cases the HB will submit a cable schedule so all known cable runs are identified. The HB must be informed in advance of the likely competition training times to avoid any scheduling conflict with the broadcast installation</p>
<p><u>Power Supply Requirements</u> Both technical and backup power supply requirements will need to be identified</p>	<p>HB to formally request a technical power supply specification for the OB and the domestic production vehicles, while the TVM will manage and co-ordinate requests for attending RHB's</p>
<p><u>Commentary Booth Positions</u> If permanent commentary booths are not available, FIS's appointed media agent may supply according to a specific agreement with the OC and demand from RHB's</p>	<p>OC to identify expected positions for commentary booths and the survey should check the sight lines as well as the supply of power, furniture, heating, telecommunications and suitable weather protection</p>
<p><u>Parking, Medical Services and Transport</u> Practical and Physical considerations</p>	<p>The survey should identify parking availability and the provision for medical services, public conveniences and media transport facilities</p>

1.4 Documentation Required Pre-Survey

The appointed host broadcaster expects to receive the venue and competition site drawings not later than two weeks in advance of the survey.

1.5 Documentation Following Survey

it is essential that there is a smooth and timely distribution of information between all contributing parties and each will make sure the following documents are delivered according to the timeframe specified below between the OC, FIS, TVM and the Host Broadcaster:

Host Broadcaster

- Master camera plan of the competition venue including scaffold towers and platforms, together with microphone positions to be delivered not more than 4 weeks after the survey
- Provisional TV compound layout may follow up to 10 days before the competition with the inclusion of attending RHB's and satellite uplink vehicles. The final version may be updated shortly before the competition itself
- Cable Schedule as required
- Daily Schedule for HB in terms of tender vehicle arrival, park and power, cable installation, skidoo availability, camera platform build, installation of all timing points, full rig and technical rehearsal. Note the training schedule should be provided to the Host Broadcaster as soon as it becomes available in order to coordinate the cable installation

Organising Committee/TVM

- Commentary booth plan with broadcaster divisions
- Start Area, Finish Area, Mixed Zone, including the divisions within the Mixed Zone

NB: Examples of these plans are included in the annex.

1.6 Media Agent Liaison with HB and Media Rights Holders

The media agent (TVM) shall act as the principal point of contact for all international TV and media rights requests associated with the competition. The TVM represents the International media rights for the event and is the only authority that may approve accreditation and other supplementary access requests from attending rights holders.

In particular, the TVM will handle all requests by RHB's who may wish to attend the competition including their logistical and practical needs such as accreditation, parking, security, local labour, accommodation and technical facilities. The TVM will coordinate specific requests for access and the use of ENG or unilateral cameras that may require operator bibs and authorisation stickers.

The TVM will also be the principal point of contact for non-attending RHB's in terms of signal delivery, coordination of feeds, pre and post unilaterals and the distribution of the daily running orders. In advance of each event the TVM will distribute the satellite coordinates to all international rights holders together with the necessary RAS or BISS codes and timing schedules, including line up periods.

Requests which specifically require action or co-ordination by the host broadcaster are communicated accordingly and the relevant documentation will be shared with the broadcast partner concerned. The host broadcaster will identify a suitable technical contact (as well as the producer or production manager) for the co-ordination and delivery of all HB related matters and facilities requests.

2. Television Production

2.1 General

TV agreements with a broadcasting organisation or Production Company must ensure that this Broadcast Manual is applied to ensure the production quality and TV transmission of FIS Skiing World Cup events included in the FIS calendar.

2.2 High Definition Technical Specification

All FIS events must be produced in High Definition in the technical standard of the country in which the event takes place.

2.3 Audio Specification

Audio line-up signals are defined as -18dbfs and must be produced as a stereo international pair. An international signal does not and will not include voice over or commentary in any language. Host Broadcasters may choose to produce an event using 5.1 Surround Sound providing a stereo international pair is available from the tailboard.

2.4 Satellite Uplink Specification and Distribution

The satellite uplink facilities provider is obliged to provide the necessary cabling from their SNG unit to the host broadcaster's tailboard. Typically the distance will be short and convenient, although approximate distances and parking positions will be defined during the site survey.

The specification is as follows:

- Two HD video cables with embedded international stereo FX, (A primary path and a backup)
- Specific instructions regarding the transmission modulation and schedule will be documented in good time in advance of the event.

2.5 Power supply

The LOC will be responsible for the installation of the necessary power supply, including UPS as agreed with HB, to ensure the production of the multilateral signal and meet the needs of UB's. The cost of electric power actually used and/or the fuel consumed for generators will be paid for by the HB and/or UB's.

3. Multilateral TV Production Considerations

3.1 Production Standards

FIS expects Host Broadcasters to offer exceptional standards of production for all winter sports events and aims to establish an excellent professional relationship with the appointed TV Producer /Project Manager.

TV coverage of FIS Skiing events should aim to capture the athletes' determination and competitiveness, the venue atmosphere, drama and human aspects of the event including the finish/win sequence and podium presentation. The overall graphics presentation for any Skiing event is crucial to aid the understanding of real time race activity and must not be underestimated. The following items are key values which FIS associates with high standards of production:

- A continuous live international broadcast formatted in a way that can be easily scheduled in a programming slot with opening titles, appropriate and relevant production before the competition start (according to a documented running order), the competition itself, results summary, flash interview, podium presentation and closing animation). The multilateral broadcast must not show any presenter in vision, or include inserts or commercial elements associated with the domestic broadcast
- As a rule, the international television feed should be self-explanatory as a viewing experience and not be dependent upon listening to a commentary
- The production will provide an uncompromisingly fair and impartial coverage of each competitor (with respect to the storytelling process and the format of the competition)
- Through appropriate shot selection and replay options, the viewer will be given an insightful, informed and credible account of the whole competition
- By sensible positioning and use of fixed, mobile and specialty cameras units the action and dynamic of the competition will be captured taking into account the limitations of the budget and available facilities
- Better understanding of the competition will be provided through a clear and informative graphics presentation giving accurate information in real-time
- Through the sophisticated use of experts working with a carefully prepared communication systems the story telling process for all disciplines will be assured
- Thoughtful and consistent coverage of podium ceremonies will be produced
- Adequate consideration will be given to the presence of advertising and event sponsors while respecting the course dynamics and natural landscape
- The live transmissions must include all FIS graphics related to each discipline, particularly the official FIS logo and replay wipe, start lists and competition results as well as the overall event and World Cup standings

The discipline specific Production Plan and Coverage Philosophy is given as an annex.

The television viewing experience is greatly enhanced by correct and strategic positioning of microphones and it is important to select the appropriate positioning of directional microphones with windshield and woolly sock protection. In some cases, follow microphones might be required to capture the athlete's movement. Capturing sound from key points, depending on the discipline, such as the start and finish areas, the hill climbs, pit stops, coaching zones and spectator tribunes is an essential component of the television production.

3.2 Technical Infrastructure

The representatives of the HB are expected to arrive at the competition venue sufficiently in advance of the first transmission to ensure the technical set up for the event. During this time and according to a documented timetable, all relevant cable paths must be installed as well as camera platforms and any speciality camera systems including RF devices. The director will also confirm with the timing and data partner the exact placing of all timing and measurement positions so that the camera positioning is accurate around these points.

All safety requirements will be checked, including 'hidden' cables beneath the snow, the overall snow conditions and any possible course changes. Camera platforms and speciality camera units will be examined for their safety and view of the course.

The FIS Race Director will provide a final safety approval for camera platforms on the race course and in the competition area. The HB is expected to follow their own risk management procedures following documented guidelines in their individual event production manuals.

3.3 Cabling

Cabling is the responsibility of the HB and attending unilateral broadcasters, although the OC will prepare the necessary cable paths, conduits, ducts, tubes, bridges and safety elements for the cable installation in and around the competition venue itself. FIS insists the following guidelines are adhered to:

- Cables should not cause any obstruction or safety hazard to athletes, course officials, volunteers or spectators and must comply with local safety and security regulations
- Cables should not be laid over the advertising boards
- Every attempt must be made to ensure cables are installed discreetly and as unobtrusively as possible, particularly in the sensitive areas shown by the television cameras
- As and where necessary, cable bridges, cable ties, cable mats, yellow jackets and dressing should be used to make cables safe and secure
- The HB must provide assistance to visiting broadcasters to ensure their cabling needs are met
- The OC is responsible for installing the cables between the host broadcaster's production vehicle and the FIS data and timing service provider

3.4 TV Compound

Occupying a location identified during the site survey the TV Compound must be carefully managed by the HB, particularly with regard to parking and power supplies for all attending parties. The TV Compound should include adequate space for multilateral and unilateral SNG vehicles, tender trucks, a protected power supply, production offices, storage space and any temporary catering facilities.

HB's are responsible for producing a detailed parking plan of the TV Compound and should have a technical representative with decision making authority available when vehicles arrive, including those of attending unilateral broadcasters.

An uninterrupted power supply (UPS) must be provided to the HB and attending RHB's by the OC.

3.5 Lighting Installation

For events scheduled for evening/night races the complete competition area as well as the areas significant for the TV transmission must be lit with a minimum of 1000 lux measured at any point of the competition area in the direction of the main television cameras. In general, the competition area must be evenly lit with a constant colour temperature.

The course lighting must be supplied and installed by the OC under the supervision of the television production lighting supervisor. This matter can be discussed in further detail during the site survey.

3.6 Transition Replay Animation

The 25 frame FIS transition replay animation (wipe) will introduce slow-motion or super-slow-motion replays into the broadcast. The slow motion package should start and finish with a moving picture, not a freeze-frame. Within the package, the transmission from one slow motion to another should be a dissolve of 25 frames. Each replay sequence must be introduced by the FIS transition replay animation and relate only to the FIS Logo and the name 'FIS World Cup'. Any other branded replay elements are not allowed unless permission has been granted by the FIS. The same animation will carry these views off-screen to signal the return to live coverage. The animation will be accompanied by a 25 frame audio effect.

The transition replay animation will be supplied in advance by the TVM as a sequence of targa files or as a fill and matte animation supplied on videotape.

In the United States and Japan, the transition replay animation will run for 30 frames, according to the 525 line/60Hz system.

3.7 Use of Specialty Cameras and Handhelds

Typically handheld cabled or RF camera units, RF units on ski-doo's, Jimmy Jibs, polecams, helicams, rail cameras and other speciality cameras will appear on the camera plan produced by the HB. The number and type of these speciality cameras will depend on the discipline and the production philosophy of the HB. A hand held RF camera may be the best choice to conduct the post-race flash interview featured in the multilateral feed.

Note that host broadcasters using rail cameras must supply to the Data and Timing Supervisor the frequency and power supply used to avoid any conflicts with timing equipment.

3.8 Record and Replay Devices

Host Broadcasting Organisations are expected to incorporate at least 2 X EVS video record and replay servers as part of their overall facilities inventory, one of which may be a Super Slow Motion server (SSM). Typically each competition can be followed by a short replay sequence of the highlights. The HB is also expected to make 2 x safety copies of the programme to Digital Videotape including a separate recording of any pre and post unilaterals. 3 x DVD copies of the programme are also required and will be coordinated with the attending TVM.

3.9 Photo Finish

The FIS Data and Timing service provider will supply and install photo finish camera technology across the finish line as specifically required by certain disciplines. This still image is available to the host broadcaster via the existing connectivity for the graphics service. The installation of the photo finish cameras should be carefully coordinated with the host broadcaster as the photo finish cameras must have priority in terms of positioning and installation.

The Jury will decide if a photo finish image is required to determine the final positions and evidence of the photo finish will be revealed in the results tables.

3.10 Audio Considerations

In general directional microphones protected with windshields and woolly socks are positioned with both fixed and mobile camera units sending the audio signal back by triax (or via the RF transmitter) to the camera CCU.

Some stadium venues may benefit from spectator effects microphones positioned towards the main tribune or grandstand. Effects microphones are also required to capture the indications to the athletes at the start of the competition.

Although the public address announcer does not need to be directly available as a source, the PA Audio source may be included for the benefit of the National Anthems.

For the benefit of the flash interview (and any scheduled pre or post-race unilaterals) a hand held dynamic microphone should be available beside the mixed zone and close to the exit gate.

3.11 Use of music

FIS will supply a selection of music to the Host Broadcaster employing a theme used for all FIS Skiing events without the need for any specific music use reporting mechanism.

3.12 Podium Presentation

Towards the end of the live TV transmission, as soon as possible after the result is known the presentation of the first three athletes shall take place in the designated area.

The original site survey will help determine the exact position of this presentation and the camera positioning should be included in the coverage plan of the HB.

Athletes must attend the Winner's Award Ceremony with their competition suits, gear and clearly visible race bibs. TV interviews may take place following the podium presentation only in the designated Mixed Zone positions.

4. Unilateral TV Requests

Unilateral broadcasters are widely encouraged to attend the competition venue, both for customisation of their programming needs and to conduct interviews with participating athletes. FIS seeks to establish partnerships with broadcasting organisations that can provide:

- Extensive publicity
- Widest possible transmission activity and broadcasters with large audiences
- Guaranteed terrestrial broadcasts in the host nation

RHB's must approach the Marketing Agency to order broadcast services and facilities if they wish to be present at the event.

Depending on specific TV rights agreements, domestic unilateral broadcasters may approach the OC directly.

4.1 Unilateral Broadcaster Request Booking Details

Unilateral Broadcasters must present a detailed facilities summary to the TVM who will respond to and share the relevant information accordingly.

The table below presents an example of the items most likely to be considered by a Unilateral Broadcaster in preparation for a FIS Skiing event:

Item	Description (Example)
TV Compound Space	OB Van with operational dimensions Edit Vehicle with operational dimensions Tender Vehicle with operational dimensions
Power Supply	OB Van: Current (amps), phase and connector types Edit Vehicle: Current, phase and connector types Mixed Zone Position: Current, phase and connector types Commentary Position
Mixed Zone	Space required for an in-vision position subject to availability Summary of facilities to be installed in the mixed zone including lighting
Commentary Position	Partially or fully equipped with CIS Monitor, International Feed(s), Furniture & Heating
Production Container	If required and with approximate position Furniture Heating
CIS Data Monitors	Location and number to be provided
Unilateral Camera Positions	Brief Description of how many and their locations Use of RF units and wireless microphones
Host Broadcaster Signals	Example: 1 x World Feed Dirty HD + INT stereo audio 1 x World Feed Clean HD + INT stereo audio And any isolated camera feeds
Camera Stickers	Example: Camera stickers for fixed cameras in the mixed zone, in the competition venue and for ENG crew
Bibs	Example: For course inspection and mixed zone
VAPPS Parking	Example: OB Van, Edit Vehicle and Tender Vehicle in TV Compound Crew Cars
Security	24 hours from dd/mm/yy
Local Labour	Example 3 X helpers from 10:00 – 18:00 on dd/mm/yy 3 x helpers from 16:00 on dd/mm/yy
Telephone Lines	Arranged through local PTT as follows: 1 x ADSL OB Van 1 x IDD OB van 1 x ADSL Production trailer 2 x IDD Production Trailer 1 x ISDN commentary booth
Accreditation List	Names of people to be accredited:
Schedule	Brief description of schedule include arrival, rig, live TX and de-rig schedule

4.2 Commentary Booths

The host broadcaster is generally not responsible for the supply and installation of commentary booths, although each event is considered on a case by case basis depending on contractual agreements between the NSA, the TVM and the HB.

However, the commentary booths themselves must meet the following specification:

- Positioned in such a way that the Competition Site (e.g. Finish/landing area and the last part of the course) are visible preferably with a profile view
- Sufficiently noise protected and separated from other positions and the public
- Adequate space for commentator, co-commentator and an interview partner or guest
- A feed of the international audio signal
- Table for documents and workspace and 8 power sockets
- Heated with 2-3 coat hooks

The option of renting a partially or fully equipped commentary booth, programme monitor and stats/data feed monitor (CIS) should be offered. The data feed monitor is provided free of charge to the commentary booths by the FIS data timing service provider. Additionally free of charge WiFi or LAN shall be provided by LOC.

FIS recognises that programme monitoring in commentary booths will reflect the aspect ratio of the multilateral signal and be available on 17" or 19" monitors.

Visiting broadcasters wishing to commentate at the venue must arrange their own commentary circuit bookings via their local national telecoms provider.

4.3 Mixed Zone and Flash Interviews

A dedicated Mixed Zone shall be provided next to the Finish Area, so that attending RHB's and other members of the media may conduct short informal interviews with the competitors. The Mixed Zone shall be set-up by the OC in consultation with the TVM and the HB. The OC will provide the necessary supplementary access devices to the Mixed Zone, while the FIS Media and PR Coordinator will manage the mixed zone activities with the support of the OC.

The appointed TVM will coordinate pre- and post-unilateral requests and work closely with the FIS Media and PR coordinator to include the post-race flash interview.

There will be an established order in the Mixed Zone for RHB's, with the first position being offered to the rights holder of the host nation.

The OC will establish the best possible layout for the Finish Area depending on the available space and their drawings will include a number of specific media zones that can be defined as follows:

Partitioned TV Boxes or live Announce Positions where attending RHB's will conduct their presentations with their own on-site production facilities. Typically they integrate their own cameras with the feed from the HB to customise their show and provide their viewers with a strong venue presence. The TV boxes are positioned at the beginning of the Mixed Zone, so the athletes may pass in front of them as they make their way down the corridor.

The HB is obliged to provide the necessary facilities to conduct pre and post unilateral requests for the specific use by RHB's. Booking arrangements must be confirmed between the TVM and the attending RHB's according to a documented rate card agreement. Interviews may be conducted using the multilateral signal path at agreed times outside the main programme window.

The next part of the mixed zone is allocated to those who do not have live commitments, is adjacent to the athletes' exit and is allocated to ENG positions. Live radio crews and the written press may share this zone, although an order of priorities is to be established and observed.

There is a written and formal procedure for post-race interviews, although some variations apply depending on the event and host nation. As a general guideline, the following procedure applies for FIS World Cup events:

- Between the end of the race and the podium presentation, only the HB and the attending TV networks with live unilateral facilities are allowed to conduct short interviews with the top three athletes. This will enable the podium presentation to take place as part of the multilateral feed without delay
- The broadcaster from the winner's home country will be the first to interview the athlete. Should the top three athletes belong to the same nation, the attending live broadcaster must decide the sequence of their interviews with the help of the FIS Media and PR Coordinator

Typically the flash interview (conducted in English via the multilateral feed) will take place directly before the podium presentation and in any case in the position as indicated in the running order.

4.4 Pre and Post Unilateral Transmissions

Bookable pre and post unilateral transmissions will be available at each competition venue. The facilities, provided by the HB will be available as a live source and carried via the multilateral signal. Pre and post unilateral facilities will include a microphone, camera with lighting and operator as required. An interview may be conducted and recorded to videotape or videodisk with playback via satellite at a time to be arranged in advance. The pre and post unilateral transmissions will be co-coordinated via radio communication with the host broadcast facilities via the attending TVM.

4.5 TV Interviews during the Live Transmission of the Event

Interviews may be conducted at any time during the competition schedule from a dedicated live camera position. These interviews shall be part of the unilateral coverage of an RHB and will not be included in the multilateral signal.

4.6 Studio and In-vision Positions

Unilateral broadcasters wishing to use indoor or covered facilities with a view over the finish area are invited to submit their requests to either the OC (domestic broadcasters) or the TVM (international broadcasters).

In both cases RHB's are invited to attend a site survey to discuss their intentions and identify a suitable studio/in-vision position. Unilateral RHB's are responsible for building their own position including all broadcast facilities, furniture, lighting and security.

4.7 ENG Crews

RHB's may send ENG crews to FIS events, and may request a suitable shooting position in the finish area or beside the course. ENG positions will be available depending on the course length, dynamics and accessibility.

Broadcasters wishing to have ENG positions must send their precise requests well in advance of the event, and must choose from the options made available by the OC and which do not directly conflict with the HB's coverage plans.

5. Accreditation and Supplementary Access Devices

5.1 Accreditation

As a general rule, although there are variations to the procedure depending on the specific agreements between FIS, the NSA's and the OC's, foreign broadcasters may approach the respective Marketing Agency with their accreditation requests.

Broadcast media accreditation requests are handled by the Marketing Agency. The accreditation for media such as photographers and the press are managed by the OC. However, the distinction between foreign and domestic media is not always applicable.

In some cases, where foreign media accreditation requests are made directly to the OC the information is immediately shared with the Marketing Agency so the management of the foreign media requests is handled by the same organisation.



Example Accreditation

In turn, the OC is advised to have a representative 'TV Contact' at the press office dealing with TV personnel, taking care of their accreditation, providing them with the necessary information and updates. This person will hand out accreditation only to the representatives of the HB and other RHB representatives.

The requests coming from domestic media are typically dealt with directly by the NSA/OC when they are responsible for domestic media rights in the host nation.

When the Marketing Agency also holds the domestic rights, he is the one managing all the accreditations, even those for domestic broadcasters. This also applies to supplementary access devices and to unilateral broadcasters.

5.2 Camera Stickers

Besides the personal accreditation to be given to the media personnel, each authorised TV camera should be identified with an 'accreditation' sticker. As implemented in previous years, RHB's with season long contracts will be offered one and the same sticker to identify their TV cameras throughout the season. It will be delivered to the RHB by the Marketing Agency before the beginning of the season.

In some cases, where RHB's may have an interest only in a single event, the Marketing Agency will prepare camera stickers that are valid for that event only.

Cameras belonging to the HB with fixed and permanent positions do not need stickers, but it is imperative that those working at the Finish Area display the authorised camera stickers at all times, to conform to the security access procedures.

The OC will inform the Security Manager that only TV cameras with the relevant sticker may access the Finish Area (and, more generally, any competition area) and FIS expects the full co-operation of the OC regarding restricted access to sensitive parts of the competition site.

5.3 Operator Bibs

A further access device will be required by all personnel who need to work in the competition area and the OC is required to supply:

- A unique bib to identify the HB personnel (and supplied by the HB) working in the competition area and in the Finish Area. It is important that the bib is very visible so that the personnel can be identified easily in the competition area and/or in the Finish Area as members of the host broadcasting crew. A clear colour distinction will support the strength of the course security operation, as well as the protection of TV rights to eligible broadcast partners
- A different bib or an armband is used to identify the rights holding cameramen and production teams, including TV commentators, allowed in the competition area prior to and during the competition. It is understood that television presenters appearing in vision do not need to wear their bibs or armbands when “on air” in vision. For the Mixed Zone Area, the Marketing Agency provides each unilateral RHB with a laminated cardboard directly on-site, a so-called “LIVE TV BOX CARD”. This card is customised for each venue with the total number of such LIVE TV BOX cards depending on FIS approval
- Another bib or armband, of a different kind or colour, (or simply a laminated thin cardboard) for the TV personnel who are admitted to the inspection only, (depending on FIS approval)



5.4 Vehicle Access Passes

Due to limited availability, vehicles wishing to enter the TV Compound or surrounding parking areas need to submit their requests including Vehicle Licence Plates (where possible) to the TVM (for international broadcasters) and to the OC (for domestic and host broadcasters).

RHB's should specify if their vehicle requires TV Compound parking or parking in the nearest available parking area. Information regarding commercial vehicles will need to include the operational dimensions (including expanding sides when parked and tailboard access).

Attached is an examples of a vehicle access pass:



6. Venue Logistics

6.1 Logistics

The OC together with the HB and FIS Race Director or Event Coordinator must select suitable locations for camera positions and platforms, the commentary tribune, mixed zone, podium position, TV Compound and associated production and timing offices. Provision must also be allowed for an uninterrupted power supply, parking facilities, bathroom facilities and catering.

The OC must also be responsible for the security of and safe access to all operational areas, including the preparation, management and distribution of accreditation. The TVM will be responsible for the management and distribution of accreditation from international members of the media.

6.2 Starting Time

All FIS events will start at the published scheduled start time including qualification and preliminary heats. Any changes to the schedule due to unforeseen weather conditions or other circumstances will be decided collectively between the FIS Race Director, FIS Event Coordinator and the OC.

6.3 Venue/Region Information

The HB is required to include at the beginning of the pre-race multilateral running order a one-minute video sequence showing the natural beauty/ items of interest/profile of the host city or region.

7. Event Operations

7.1 Definition of Roles and Contributors

FIS RACE DIRECTOR

Is the most senior officiating member of the competition management and his/her duties include the health and safety aspects of the competition venue and the surrounding environment. The race director has a key role to play in all matters affecting the sporting activity and the running of the competition. The race director is also responsible for the timing of the event as well as making decisions regarding the weather and other conditions.

FIS EVENT COORDINATOR

In addition to various other functions is the link between the Host Broadcaster and FIS, the Marketing Agency as well as the jury.

FIS TV SUPERVISOR

As described in the division of obligations table, the FIS TV Supervisor, working under the guidance and authority of the FIS Race Director, will be appointed to a specific number of events and will attend the initial planning survey, following the planning and progress until the final delivery. In particular the FIS TV Supervisor will contribute to the decisions made regarding the competition venue infrastructure and TV compound logistics and act as a point of contact to ensure all the deliverables are provided as agreed during the site survey.

TV AND MEDIA RIGHTS MANAGER (TVM)

International TV and Media rights are carefully coordinated by the appointed Media partner who will attend each and every event during the calendar season. The TV and Media Rights Manager (TVM) represents the interests of the international broadcast partners and will ensure a strong and effective planning relationship between the NSA, OC and host broadcaster, as well as attending and non-attending rights holders.

The TVM is the principal point of contact for all broadcast partners, particularly for those choosing to attend the event and which require access to the programme feed, isolated camera requests, power, commentary facilities, parking, accreditation, accommodation, office containers, security and local labour. They may have also booked local broadcast facilities and crew to assist with their programming needs at the competition venue. Providing these requests are made in advance, the TVM will ensure that the HB is aware of the requirements and the necessary planning is in place to accommodate them.

The TVM will also check the TV Compound layout in terms of space for the international uplink and any attending RHB's who may arrive with their own facilities to customise their programme from the competition venue.

The TVM will work closely with the OC, HB and FIS TV Supervisor to ensure the planning process runs to time and according to any written deadlines.

During the event phase, the TVM will produce and distribute an approved multilateral running order for each competition and will need to be sure that the running order is followed according to the published format. The TVM will ensure the international world feed is delivered to the standard required and coordinate any pre and post unilateral requests on a daily basis.

HOST BROADCASTER PRODUCER/PRODUCTION MANAGER

The principal point of contact representing the host broadcaster, will be available to handle all requests regarding the host broadcaster's responsibilities and is the likely interface with attending rights holders. The production manager will attend the initial venue survey and distribute the relevant documentation as follow up to the planning survey. The production manager will manage the activities within the TV compound designing a schedule for the park and power process and making sure all the cabling requirements are met according to specific requests and deadlines. The production manager will also work closely with the OC regarding practical considerations such as power supply, security, parking and course access.

FIS MEDIA AND PR COORDINATOR

The FIS Media and PR coordinator acts as an interface between the media and the athletes and typically arrives two days before the first competition.

Among other responsibilities, the Media and PR coordinator checks the facilities, structure and flow of the mixed zone and finish area ensuring that members of the media are given opportunities to speak with athletes after their race.

The Media and PR coordinator will manage the appropriate leader presentation which allows the TV audience and local spectators to see who is the current leader. The athlete may change several times during the course of the competition.

The Media and PR coordinator will also conduct the post-race interview for the multilateral feed and will work closely with the TVM and HB to co-ordinate exactly when that will take place.

CHIEF DATA AND TIMING SUPERVISOR (WHERE APPLICABLE)

The role and expertise of the Chief Data and Timing Supervisor may be summarised as follows:

Communicating and coordinating with all attending parties (FIS, TV/HB and the OC)

Managing all operational aspects of the timing and data service

Supervising the installation and setup of the timing and in venue results technology (timing, scoring, data handling, results, scoreboards, TV etc.)

Having considerable knowledge of the sport and competition rules

Attending the initial venue survey (as required)

Ensuring the planning, deadlines and required quality and quantity of deliverables are respected

Representing the interests of the timing and data service at venue meetings, operations and official events

CHIEF OF STADIUM (CS)

Reports to the Chief of Competition and is responsible for all activities in the stadium area. This includes the flow of competitors to the starting area, equipment marking, commercial markings, equipment control in the finish area, the flow of athletes from the finish area and providing support for anti-doping controllers.

The CS also supervises the installation of fencing, course markings and signs in the stadium area as well as coordinating the placement of the start and finish lines with the data and timing supervisor.

The CS is responsible for the security aspects of the stadium area including access and control for competitors, coaches, service personnel and the media including the preparation of the mixed zone.

The CS must make sure there is sufficient lighting to provide adequate working conditions

CEREMONY CHIEF (CC)

Reports to the Chief of Competition and the OC Chief and is responsible for the entire Winner Presentation and Prize Giving ceremony. The CC will coordinate with the FIS PR & Media Coordinator, the speaker, TVM and the Host Broadcaster regarding the exact position and timing of the ceremony. The CC will ensure that everything is prepared immediately after the race and the designated representatives are in position. Overall the CC will ensure a well presented winner ceremony according to the FIS Guidelines.

7.2 Contingency

In the event of adverse weather conditions or other circumstances threatening to postpone or cancel a scheduled event, the TVM will discuss the options with the FIS Race director, FIS Event Coordinator and OC. If an event is rescheduled the information is quickly distributed to domestic and international broadcast partners via the TVM. Even if the competition is postponed or cancelled the host broadcaster should come on air at the scheduled time with live weather conditions and an explanation of the problem and the reason any decision was taken.

7.3 Competition Communication

Although the host broadcaster is not expected to maintain permanent radio communication with the FIS Race Director, relevant issues will certainly be discussed before and perhaps during a competition via the FIS Event Coordinator.

7.4 Public Address System

The speaker and/or moderator, when present, must be informed in detail of the way the competition will be used by broadcasters, so they do not spoil the event via the loudspeaker for a broadcaster which may shuffle the order, create highlights or broadcast strategic phases of the competition. This is particularly valid for broadcasters who have in-vision or studio positions at the venue and whose announcers are recording suitable links for their final programme.

The volume and content of the public address sound throughout the venue must be coordinated between the HB and the OC.

8. Event Phase

The Cross Country experts have prepared information regarding the preparation immediately prior to the competition. This is reproduced in this section 8 as it provides information which could assist for the final on-site preparations for all disciplines.

8.1 Run up to the first TX commitment

As soon as a FIS Cross-Country Skiing competition reaches the final planning week a number of scheduled activities must take place to fully prepare the venue, course and broadcasting arrangements in a relatively short amount of time. The following table provides an example for a combined format race (i.e. a sprint with a middle or long distance format).

Days before TX	Description
- 5 Days	Tender and support vehicles travel and park
- 4 Days	Assemble all camera platforms as well as initial cabling for both race formats.
- 3 Days	Cabling continues
- 2 Days	Director and Timing Supervisor agree and identify pre and intermediate timing points as per the survey details HB Outside Broadcast vehicles arrive as well as any mobile production facilities for attending rights holders TV Compound park and power Complete cabling, position and install cameras and microphones
- 1 Day	Initial meeting and inspection of the finish area/TV position with OC, chief of press/media to discuss any details SNG vehicles park and power with cabling to the HB production vehicle Complete OB Van configuration and perform technical facilities check before the end of the day and according to local daylight conditions As part of the facilities and production rehearsal produce the test race with timing (as required and agreed on a case by case basis) Commentator's briefing (as required) TV coordination meeting to include current progress, all technical issues, running order brief and programme of unilateral activities Third and final meeting with all FIS management parties, the OC including Chief of course, Stadium and ceremonies and the venue announcer
TX Day 1	Complete Race 1 and reset of course for race 2
TX Day 2	Full facilities check and rehearsal followed by race 2

8.2 Camera Production Test and Rehearsal

The competition format, location and experience of the host broadcaster will determine the necessity to conduct a full test race in advance of the first televised commitment and this requirement should be considered on a case by case basis.

If required, the NSA and OC will organise a junior or amateur race in good time in advance of the first competition. The 'test' race will take place at a specific time and must include a full timing service and a post-race presentation.

Some experienced broadcasters use a skidoo travelling at a similar speed to the athletes to step through the camera positions and cutting sequence.

8.3 Daily Call Sheets

The HB is expected to distribute call sheets on a daily basis to their production crew to include the necessary checks of their production facilities including the interface with timing and signal path to the uplink vehicle.

All pre and post unilateral requests must be included in the daily call sheets.

EXAMPLE DAILY CALL SHEET

Time	Description
08:00	Engineering crew arrive on site and check power and facilities
09:00	Production crew arrive on site, (cameras, audio assistants, VTR, graphics, uplink)
09:15 – 09:30	Production briefing
09:30	All camera operators and crew to positions
10:00 – 10:30	Full faces check and rehearsal
10:50 – 12:30	On Air Race 1
12:35 – 12:45	Post unilateral 1
12:45 – 12:55	Post unilateral 2
13:00 – 14:00	Lunch
14:00 – 14:20	All cameras and crew in position
14:20 – 15:30	On Air Race 2
15:35 – 15:45	Post Unilateral 1
15:45 – 15:55	Post unilateral 2
16:00	Off air, de-rig and power down

9. Advertising Considerations

9.1 Advertising Considerations

One of the principal methods of financing the costs associated with staging FIS competitions is through event sponsorship. Sponsors play an invaluable role in supporting the NSA's and OC's at the event level by providing a substantial part of the funding and promotional support. In addition, they provide much of the funding that supports long term development and grassroots programmes in the sport. These sponsors derive the majority of value in their investment from the advertising exposure they receive through the broadcast coverage.

For this reason it is important that the HB and those responsible for handling the on-site advertising operations for the sponsors at each race establish an effective working relationship to best meet the objectives of the broadcasters and commercial partners.

9.2 FIS Advertising Rules

The document 'FIS Advertising Rules' are the strict guidelines for advertising possibilities in the Competition Area and in particular the areas in the view of the television cameras featured in the production plan.

The guidelines contain general advertising principles for all FIS events and point out an exact description of the advertising possibilities for each individual event.

The organisers assigned to carry out an event by FIS and their NSA's are responsible for the observance of these advertising rules. Objections and complaints can be made to the respective NSA or to FIS and in case of non-observance the organisers are fully liable towards the FIS Council as well as the respective NSA.

The FIS Advertising Rules for all disciplines are published on the FIS homepage www.fis-ski.com.

9.3 FIS Marketing Guide

Since the season 2010/11 FIS has established together with FIS Marketing AG a new marketing concept affecting a number of disciplines. All details of the concept and its installation for all disciplines are published on the FIS homepage www.fis-ski.com.

9.4 Advertising Check

The OC together with the HB and the Marketing Agency must complete a final check of all advertising related matters at least two hours before the first scheduled competition. Advertising personnel are not permitted to leave their positions later than one hour prior to the competition and therefore will need to finalise the advertising installation before that time.

During TV rehearsals or training runs, the advertising manager is advised to check the positioning of advertisements by looking at the TV picture in the TV Production Office or OB van. The advertising check is based on a balance of the 'FIS Advertising Rules' and the sport security aspects, especially to the selected camera positions, the selection and installation of advertising spaces and special advertising elements, e.g. inflatables in the Competition Area.

9.5 Placement of Advertising Banners in the Competition Area

The advertising installation is positioned by the Marketing Agency in collaboration with the HB and under the supervision of FIS during the preparation of the competition venue.

The OC together with the Marketing Agency is obliged to ensure that advertising banners are fixed on appropriate installations taking account of safety requirements. The exact dimensions of the material and the frames depend on the type of events and the space available.

10. Graphics Data and Timing

10.1 FIS Graphics, Data and Timing Partner

FIS, in close partnership with its chosen third party service provider is responsible for the data and timing service that will deliver the FIS TV graphic presentation used during the transmission of the international signal for any given FIS event.

The service provider, under the supervision of the TV Producer, will be responsible for the complete graphics presentation, including the overall race timing, pre and intermediate timing, results and standings, course/hill profiles, name supers, photo finish, weather, title, TV Director credit etc. This data and timing service:

- Shall be a component of the international world feed and will therefore be seen by all RHB's in their TV transmissions. The service is provided in the English language
 - Will be inserted with the corporate name/logo free of charge by the HB according to the Advertising Rules which are attached
- RHBs will not remove any identification when transmitting the multilateral signal

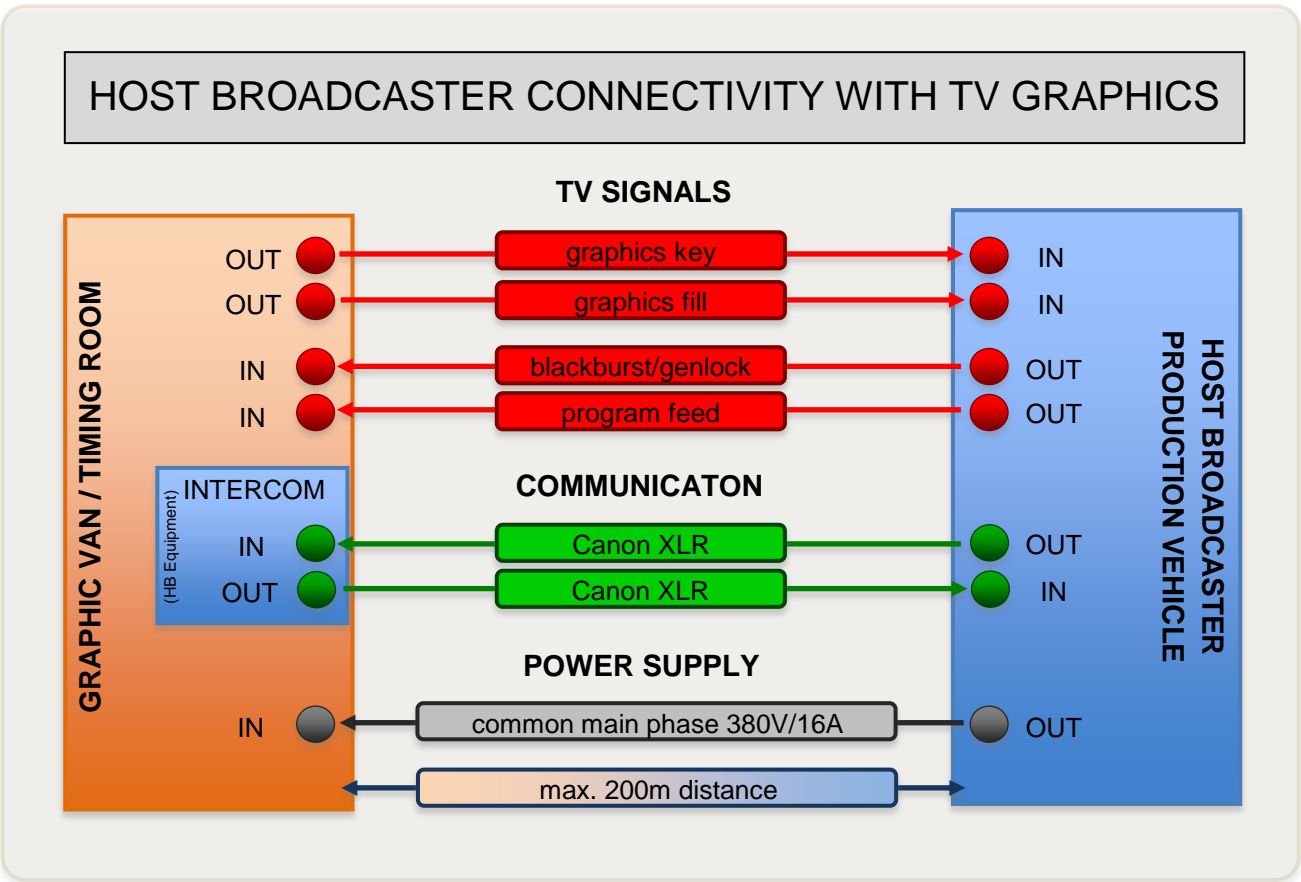
The HB is responsible for providing and installing the necessary cables from the timing and data room to the production vehicle/facilities including a talkback system. The HB must also provide a colour monitor for the timing room with the dirty programme feed.

The graphics, data and timing partner will also be responsible for the photo finish technology and will make available this image to the host broadcaster as and when required. As a standard component of each running order, a course/competition venue profile animation is included in the format and this will be prepared and delivered by the timing partner.

Typically the animation is pre-recorded to EVS by the HB and used in rehearsal and during the programme at the HB's convenience.

The data and timing service will be located as conveniently as possible to the TV Compound infrastructure and the location will be identified during the site survey.

The connectivity can be summarised as follows:



11. TV Ratings

At the end of the season in April of the current year, the RHB's are invited to provide data regarding the ratings of skiing event broadcasts.

The FIS and the NSA's will receive, free of charge, a review on the TV ratings for the transmission of skiing events through the national networks.

All RHB's are requested to use the FIS TV rating form (**copy annexed**).

12. Glossary of Terms

Analogue	A continuously variable signal, circuit or device designed to handle such signals. Opposite to digital.
Aspect Ratio	The aspect ratio of an image is its width divided by its height. For television and video applications, aspect ratios are pronounced 'x-by-y'. The two common videographic aspect ratios are 4:3, universal for standard-definition video formats, and 16:9, universal for high-definition and digital television.
Bookable Facilities	Technical or production services, facilities or equipment that can be reserved by Broadcast Partners for their own use.
Broadcast Compound	A specific area at a venue designated for the parking and operation of mobile technical and production trucks, office trailers, SNG and other vehicles.
Broadcast Partner	A Broadcaster that has acquired the rights to broadcast (a) FIS World Cup race(s) in a particular territory or territories, also known as a RHB (Rights Holding Broadcaster).
Commentator	Radio or television sports announcer commentating on the event. Commentator may work from a commentary position at the venue, or in some cases 'off tube' using the multilateral signal at a remote location.
Downlink	Segment of the satellite circuit from the satellite to a receiving dish. To complete the connection an uplink is required.
EET	Equivalent Electric Time: An official time measurement determined from the back up timing systems for a time missing from the primary timing system.

ENG	Electronic News Gathering, using a portable lightweight field camera. Typically used by a small production (or ENG) crew.
EVS	The name of the manufacturer of an industry standard video disk recorder used for slow motion replays and creating highlights packages.
Feed	Television or radio programme transmitted, or fed, to Broadcast Partners.
Flash interview	Brief interview of athletes done just before or immediately after the race. Often used as a term to describe an interview included in the multilateral world feed.
FIS	Fédération Internationale de Ski
Frequency	The number of cycles per second of wave signal. Measured in Hertz (Hz) or kilohertz (kHz) or MegaHertz (mHz).
GMT	Greenwich Mean Time, which is universally recognised and fixed and not affected by regional daylight saving adjustments and is used as the reference to determine event schedules, broadcast transmissions and running orders.
HB	Host Broadcaster. A television network or production company responsible for producing the international television signal of the competition for use by RHB's. The HB also coordinates their unilateral requirements and ensures the distribution of the television signal.
HD/HDTV	High Definition Television. High-resolution digital television combined with Dolby Digital Surround Sound.
Injection Point	Technical facility that allows Broadcast Partners to play back and send recorded footage to their home station.
ISDN	Integrated Services Digital Network. A technology using telephone lines which provides improved audio quality for transmission and a number of implementation types allowing digital data transfer.
Media Tribune	Part of the spectator stand specifically reserved for media such as written press, photographers, TV and radio commentators and observers. Accessible only with the appropriate accreditation.

Mobile Uplink or SNG	A mobile communications satellite earth station. Mobile units are usually vans equipped with advanced, two-way audio and video transmitters and receivers, using dish antennas that can be directed at geostationary satellites.
Multilateral signal	The multilateral television signal produced by the HB. It is impartial and produced so that there is no focus on one particular athlete or country. The multilateral signal contains graphics, replays and natural sound from the venues, but not commentators, interviews or advertising.
NSA	National Ski Association
OB Van/Truck	Outside Broadcast Vehicle. Mobile television production control room for remote coverage of an event, using a range of standard broadcast facilities. Sometimes additional vehicles are used as dedicated videotape or graphics support vehicles, and are designed to integrate with the principal OB vehicle.
OC	Organising Committee
Ratings	The rating of a show is the percentage of households watching a particular programme in relation to the total number of television households in the country.
RHB	Rights Holding Broadcaster(s). A television company that has acquired the rights to transmit an event. RHB may either have production staff at the event to customise its programming through integrating unilateral production with the multilateral signal or receive the multilateral signal at its home studio to create its programme.
Shares	The share is the percentage of households watching a show in relation to the total number of households that are watching television at a given moment in time.
SSM	Super Slow Motion, a broadcast industry standard to describe a video processing system that delivers individual frames at high speed, typically 75 frames per second, or a field rate of 150/s. Providing that both a camera system and the recording system are operating at 150/s the replayed signal is of very fine quality, and highly suited for sports broadcasting.
Timing	The timing clock is activated when a skier passes through a pivoting, knee-high wand to begin his or her run.

Transition Replay Wipe	The short animated movement or wipe, used to signify the transition from live pictures to a replay or sequence of replays. The same applies in the reverse direction, from the last replayed item back to live pictures.
Unilateral Signal	An individual or single production/transmission intended for a specific destination or territory. Unilateral Broadcaster is also a term given to RHB who has reserved unilateral facilities for services and equipment for its own purposes.
UPS	Uninterrupted Power Supply. Used for critical broadcast or event deliveries when the primary source of electricity is supplied from the local grid. Should there be a power failure, the UPS protects the demand, first by a series of heavy duty batteries to supplement the power and then by electricity from a diesel generator. The process is a seamless function designed not to disturb or interrupt the power supply for the broadcast or live event operation.
Video Control	The video controller will control that the gates are passed correctly.
Yellow Jackets	Industry standard protective cable trays, for indoor and outdoor use in order to identify a cable path in a safe and protective jacket. Usually positioned at ground level, where the cable path crosses an area also used for public access.

**BROADCASTERS'
MANUAL
2013/14**

**FREESTYLE SKIING
AND
SNOWBOARDING**

Freestyle Skiing and Snowboarding Annex to the FIS Broadcast Manual

1. Competitions.....	3
2. Events.....	3
2.1 Moguls.....	4
2.2 Dual Moguls.....	5
2.3 Aerials.....	6
2.4 Big Air.....	6
2.6 Halfpipe.....	8
2.7 Cross (Ski Cross / Snowboard Cross).....	10
2.8 Slopestyle.....	11
3. Competition Formats, Phase and Rounds.....	12
4. Start Intervals.....	13
5. Competition Breaks.....	13
6. Specific elements of TV Coverage.....	14
6.1 Starting Area.....	14
6.2 On Course.....	14
6.3 Finish Line.....	15
6.4 Line Up.....	15
6.5 Reaction.....	15
7. Special TV Production requirements.....	15
7.1 Video Control.....	15
7.2 Slopestyle TV Production for Judging Purposes.....	16
7.3 Monitor Requirements.....	16
7.3.1 Moguls / Dual Moguls.....	16
7.3.2 Aerials.....	16
7.3.3 Parallel Giant Slalom / Parallel Slalom.....	16
7.3.4 Halfpipe.....	16
7.3.5 Freestyle Ski and Snowboard Cross.....	16
7.3.6 Slopestyle.....	16
8. Awards Presentation.....	17
9. Coverage Philosophy, TV cameras and running orders.....	19

Freestyle Skiing and Snowboarding Annex to the FIS Broadcast Manual

This Annex details the specific requirements, obligations and arrangements for broadcasting organisations and production companies to create the best possible platform for the planning and final delivery of a first class FIS Freestyle Skiing and Snowboard competition for the international television audience.

Should you have any questions about the coverage of Freestyle Skiing and Snowboard competitions then contact the address below:

FIS International Ski Federation
3653 Oberhofen (Switzerland)
Tel: +41 33 244 6161
Fax: +41 33 244 6171
www.fis-ski.com

Joseph Fitzgerald
Freestyle Coordinator
Tel: +41 33 244 6161
@: fitzgerald@fis-ski.com

Uwe Beier
Snowboard Race Director
Tel: +49 171 680 0093
@: beier@fis-ski.com

Kathrin Hostettler
Freestyle Skiing & Snowboard Assistant
Tel: +41 33 244 6161
@: hostettler@fis-ski.com

Marcel Looze
Marketing Manager
Tel: +41 33 244 6161
@: looze@fis-ski.com

1. Competitions

During the course of the winter season, the most important series of international competitions are established in the FIS World Cup Calendar for the disciplines of Freestyle Skiing and Snowboarding.

35 to 40 individual competition days for both ladies and men per discipline are staged in major winter resorts and cities around the world. The competitions occur in all major winter sports nations and also in some non-traditional winter sports nations.

The FIS Ski and Snowboard World Championships are held in odd years with the Olympic Winter Games held every four years in even years. The number of competitions held during the competition season depends on whether the year falls in a World Championships or Olympic year.

Generally, the Ladies and Men's events, with both qualifications and final phase are organised jointly on the same courses.

2. Events

Freestyle Skiing and Snowboard competitions have developed from the 1970's to the 2000's. Both disciplines reflect the interests and style of the younger generations. Some of the events are the winter versions of skateboarding and surfing or have been adapted from the more classical FIS events like Alpine Racing or Ski Jumping.

The two disciplines share the same course specifications for several events and also have specialized events which are specific to each disciplines.

Table of Freestyle Skiing and Snowboarding Events by Discipline

Events / Disciplines	Freestyle Skiing	Snowboarding
Moguls (MO) and Dual Moguls (DM)	X X	
Aerials (AE)	X	
Big Air (BA)		X
Parallel (PGS, PSL)		X X
Halfpipe (HP)	X	X
Cross (SBX, SBX Team/ SX)	X	X X
Slope (SBS / SS)	X	X

Overview of the different events

In Freestyle Skiing, there are 5 distinct events that are organised for both ladies and men – Moguls (Dual Moguls), Aerials, Ski Cross, Ski Halfpipe and Ski Slopestyle.

In Snowboarding, there are 5 distinct events with Snowboard Parallel (Parallel Giant Slalom/ Parallel Slalom), Snowboard Halfpipe, Snowboard Cross, Snowboard Slopestyle and Big Air

Freestyle Skiing and Snowboarding share 3 common courses and events; the 'cross', 'pipe' and 'slope' events.

2.1 Moguls

Each competitor chooses which of the three to four different lines on the mogul course to ski down. After the start signal, the competitor skis down a steep slope and over a series of offset large bumps (moguls) as high as 1.2 meters, spaced between three to four metres apart. There are two sets of 'air bumps', one near the top of the course, the other near the bottom, where the competitors are required to perform two different jumps of their own choice.

The goal is to ski down the course as fast as possible while performing the two jumps without technical errors or loss of balance. Different mogul jumps include the 360- to 180-degree spins, loops (side flips), off axis jumps, back and front flips, and flips with twists. The jumps can incorporate different grabs or holds of the legs or skis. Going down the moguls, competitors need to keep their upper body facing straight down the hill while their lower body and skis are constantly turning. Maintaining snow contact with the skis is an important element.

The competition consists of a series of qualification and final phases. Each competitor skis the moguls course once per phase. In the qualification round, all competitors are randomly sorted on the start list. From the results of Qualification 1, the top 10 competitors will be seeded directly into the Final, which will have 12, 16 or 20 competitors based upon the level of the competition. In Qualification 2, the remaining competitors will take a second run and, based upon the results of that run, an additional 6 to 10 competitors will be seeded into the final.

The top competitors qualified for the final will start in reverse order of the results from the qualifications, with the lowest qualified starting first and top qualified starting last. This is the same process for each sub-phase in the final.

The final will have 3 sub-phases, with progressively fewer competitors in each phase: F1, with 12 to 20 competitors; then F2 with 6 to 12 competitors; and finally F3 with 3 to 6 competitors.

Scores from the qualification phase do not count in the final. If any phase cannot be held, the results from the last phase completed will be used to determine the final rankings.

Judging

The five “turn” judges award points based on the quality of the competitors’ turns, making deductions for technical mistakes. The two “air” judges determine what jump was performed, how high they are off the jump, and the jump’s quality. Each run is timed and compared to a pace-time set for the course, with the faster competitors being awarded more points. The competitor with the highest score in the final round wins the competition.

2.2 Dual Moguls

Dual Moguls is the second mogul skiing event of Freestyle Skiing. The mogul course is divided down the middle into two separate lanes (red and blue). There is a qualification phase and a series of final phases. A starting gate is used in the final phase

Qualifications are held and the top competitors, based upon the rankings are seeded into different groups. Each competitor takes one run down either the red or the blue course based upon the starting list. The first competitor starts in the red course and the second competitor starts in the blue, with the rotation continuing until the end of the qualifications.

In the Dual Moguls finals, competitors compete head-to-head in knock out rounds. There is a series of rounds where the top 16 competitors are seeded into different heats. Before the final there is semifinal, followed by a small final (3rd and 4th ranks) and big final (1st and 2nd rank). Results from the Dual Moguls competitions on the FIS World Cup tour are combined with single moguls results to determine the overall World Cup Mogul Champion and Crystal Globe winner at the end of each season.

Judging

A panel of seven judges award marks: four judges score the turns, two judges score the air (jumps), and one judge scores the speed. Each judge has five “votes” which can be allocated between the two competitors according to the course colour they have skied (i.e. 5 Blue/0 Red; 4 Blue/1 Red; etc). Those votes are added up to a maximum total of 35 with 18 being required to move on to the next round or win the event.

2.3 Aerials

Strategically, competitors determine their inrun location based on the type of jump to be performed, their own freestyle technique and the current environmental conditions. Correct in run speed is critical to successful aerial performances and competitors can choose two of many different jumps that combine back flips and twists with differing degrees of difficulty.

Competitors are judged on the quality of take-off, height gained, form and body position, and how they maintain balance upon landing. All competitors complete two jumps in a qualification round. The top aerialists with the highest total scores from the qualification round move on to the final round. In the final round, competitors complete two more jumps in reverse order from the qualification results.

The competition consists of qualification (one or two jumps) and final (two or three jumps) phases. Each competitor performs one jump which decides if he/she advances to the next phase.

The top 6 competitors from qualification jump number 1 advance directly to the final. The remaining competitors then perform a second jump. The top six competitors from qualification jump number 2 also advance to the final.

The top 12 competitors qualified for the finals will run in reverse order of their qualification rank. The final is divided into three jumps (finals), in which the points from each jump are not carried forward.

The top eight competitors from final number 1 advance to final number 2. The top four competitors from final 2 advance to final number 3. The ranking in the final is based on the scores from each jump (all competitors with three jumps are ranked ahead of all competitors with only two jumps, who again are ranked ahead of those with only one jump).

2.4 Big Air

Ski and Snowboard big air is a judged event wherein competitors perform complex tricks while in the air, using one individual jump (comparable to the jump features in the slopestyle).

The competitors' performance is evaluated on the overall impression of the quality of the jump including the in-run, take off, air time and landing.

For each jump the highest and lowest of the five/seven judges scores are discarded, and the remaining three/five scores gives an averaged counting score.

Considered for the overall impression is the amplitude, difficulty and the number of rotations as well as switch take offs or landings, frontside or backside rotations, take offs on heel or toe, different grabs, etc.

The competition consists of two phases: qualification phase and final phase. Scores from one phase are not carried over to the next phase. In the qualification, all competitors are randomly sorted on the start list.

Qualification: Each competitor is allowed to take two runs and the result from the better run is used to rank the competitor.

4-12 competitors will advance from the qualifications to the final. The competitors are run in reverse order of the qualification ranking.

The order of the three final runs will be the same as for the first run of the finals.

Finals: In the finals four to twelve finalists will have the opportunity to take three runs. The winner will be determined by the competitor with the two highest, averaged, scores of the three judged runs. The two counting tricks have to be different ones

If the Heat format is used in the qualification there will be only three judges scores averaged and counting per run.

If a Semi Final is conducted, fifty percent of the finalists will have to qualify through the Semi Finals for the Finals. The other fifty percent will qualify directly out of the qualification phase.

(If any phase cannot be completed, the results from the previous phase might be used to determine the final standings).

2.5 Parallel

A parallel event is a competition where two competitors ride simultaneously side by side down two parallel courses. The setting of the courses, the configuration of the terrain and the preparation of the snow are to be as identical as possible.

(The length of a PGS is approximately 550m, the length of the PSL approximately 350m)

The competition consists of a qualification phase and finals.

The qualification will be run on parallel courses (red course and blue course).

The qualification consists of two runs: the Qualification Run (1st run) and the Elimination Run (2nd run).

Qualification Run: the competitors with the odd bib numbers will start in the red course, the competitors with the even numbers in the blue course.

The top 16 ranked competitors from each course (16 red course, 16 blue course, 32 in total) from the qualification run start in the Elimination Run.

Elimination Run: the competitors start on the opposite course, in reverse order of their rank after the Qualification Run.

Finals: The top 16 ranked competitors from the Elimination Run, according to the combined time of the two runs, qualify for the finals. Two valid runs are necessary to participate in the finals.

A) Two Run Format:

In the finals (1/8 finals, quarterfinals, semifinals, big and small final) two competitors ride simultaneously side-by-side down the courses. All finals heats consist of two runs. The competitors change courses for the second run ("Red" and "Blue" course). The loser of the first run starts with a time delay, which corresponds to his/her time behind from the first run.

A competitor who has no valid time (who does not start, does not finish or is disqualified in the first run), starts the second run with the Penalty Time delay.

The Penalty Time is a maximum of five per cent of the fastest qualification time per gender - with a maximum of one and a half (1.5) seconds. The winner after two runs advances to the next phase.

B) Single Run Format :

In the finals (1/8 finals, quarterfinals, semifinals, big and small final) two competitors ride simultaneously side-by-side down the courses.

Each pair of competitors has to make only one run.

After each heat the competitor with the faster qualification time (combined time of qualification run and elimination run) can choose either the red or blue course.

The winner of the run advances to the next phase.

2.6 Halfpipe

In the Halfpipe, one competitor at a time performs a routine of acrobatic jumps, twists and tricks on the inside of a half-cylinder-shaped snow tube or ramp while moving from one side of the halfpipe to the other.

Named because of its shape, the half-pipe has its origins in skateboarding, where competitors take off from a near-vertical wall and perform a variety of tricks in the air.

Starting at the top, the competitor drops down one of the walls and takes off on the opposite side to attempt the first trick. The competitors usually get two runs down the pipe and are ranked by the judges. They perform tricks about five to eight times ("hits"), crossing over between the two walls to show off their skills as they work their way down the pipe. The aim is to score points by carrying out different maneuvers in the air, such as grabs, twists, flips and spins.

Freestyle Skiing: The competitors performance is assessed by five judges, one marking on the quality of the straight air tricks, one on the tricks with rotations, one on the height (or amplitude) of the tricks, and two give rankings for overall impression based on the variety of tricks and the general flow.

Straight airs often involve grabbing the skis in the air. Rotations involve vertical flips, horizontal spins and twists, and the light twintip skis allow the competitor to land with either ski.

Judges deduct points for falls, body or hand contact with the snow, unstable body position, bad landings and slowing down. For each run, the judges' scores are averaged.

The competition consists of two phases: qualification phase and final phase. Scores from one phase are not carried over to the next phase. In the qualification, all competitors are randomly sorted on the start list. The rider's best score of the two runs is counted, and the top 12 men and 12 women qualify for the final. The competitors run in reverse order for each of the 2 rounds in the final.

Each competitor is allowed to take two runs and the result from the better run is used to rank each competitor.

If any phase cannot be completed, the results from the previous phase will be used to determine the final standings.

Snowboarding: The competitors' performance is evaluated on the overall impression of the quality of the run from start to finish.

For each run the highest and lowest scores of the seven judges are discarded, and the remaining five scores gives an averaged counting score.

If the Heat format is used in the qualification there will be only three scores averaged and counting per run.

The judges evaluate the precise nature of the run in relation to maneuvers attempted, both individually and as a sequence. The overall composition of the run is very important as the judges evaluate the sequences of tricks, the amount of risk in the routine, and how the rider uses the pipe. The judges take falls, mistakes and stops into consideration and can deduct up to 25 % of the points of the run/judge for each fall/stop.

Considered for the overall impression is the amplitude, difficulty and the number of rotations as well as switch take offs or landings, frontside or backside rotations, take offs on heel or toe, different grabs, etc..When performed with amplitude and good execution, straight airs can be highly rewarded.

The competition consists of two phases: qualification phase and final phase. Scores from one phase are not carried over to the next phase. In the qualification, all competitors are randomly sorted on the start list.

Each competitor is allowed to take two runs and the result from the better run is used to rank each competitor.

12 or 6 (ladies only) competitors will advance from the qualifications to the final. The competitors run in reverse order to the qualification ranking.

The order of the second finals run will be the same as for the first run of the finals.

If a Semi Final is held, fifty percent of the finalists (6/3) will have to qualify through the Semi Finals for the Finals. The other fifty percent (6/3) will qualify directly from the qualification phase.

(If any phase cannot be completed, the results from the previous phase will be used to determine the final standings).

2.7 Cross (Ski Cross / Snowboard Cross)

Although new to the World Cup and Olympic sport programme, cross has existed as a sport since the early days of Alpine Skiing competition. The “mass start ” appeal of ski cross and snowboard cross, sets the stage for fast and exciting competition. Not restricted by formal structures and formats, cross is part of the FIS World Cup Tour and added to Olympic programme in 2006 for snowboarding and 2010 for freestyle skiing.

The cross course, is designed to test competitors’ skills, incorporates turns in a variety of types and sizes, flat sections and traverses, as well as rolls, banks and ridges similar to those found on a normal slope or free ride terrain park. Physical endurance and strength play a key role in cross as competitors participate in four to five runs lasting 60 seconds or longer.

In Freestyle Skiing a timed qualification run is used to seed competitors into different heats, of four competitors each.

In Snowboarding there is the best out of two qualification runs determining who qualifies for the finals and which athlete gets seeded in the respective heats of four or six competitors. If the final groups consist of heats of four or six athletes, depends on the layout of the SBX courses (width, speed) and will be determined prior to the qualification phase.

The starting field for the final will be 16 or 32 competitors for ski cross and 16/24 or 32/48 for snowboard cross competitions, depending if the final heats consist of 4 or 6 competitors. At the sound of the starting device, the competitor begins racing down the course. The start, as well as the first sections before the first turn, are critical parts of the course, as passing can easily occur here. While other passing areas are designated on the course, interference with other competitors can lead to a competitor’s disqualification.

In the heats, the first two / (heats of four) / three (heats of 6) competitors to cross the finish line advance to the next heat, while the last two competitors are ranked based on qualification times. The same procedure applies for the quarter, semi and final rounds. The “big final” round determines which competitors place first to fourth / sixth, while the “small final” determines those who rank from fifth to eighth/ seventh to twelfth place.

The competitors who are eliminated in each heat are ranked according to their placing in the heat, and then compared to the other competitors in the other heats. For example, all 3rd ranked competitors in the heats are then ranked, within this group, according to the seeding run.

Competitors are allowed to make remarks to a key FIS official or jury member and request that the run be reviewed for possible interference or intentional contact by other competitors.

According to the rules, an appointed FIS Official (video controller) is allowed to review the incident and makes a proposal to the jury members for a further possible course of action. Competitors can either be disqualified or can receive some sort of penalty, or a verbal warning.

Therefore, it is necessary that special equipment is made available to the jury in order to review the run frame by frame, and is to be provided by the host broadcaster.

2.8 Slopestyle

Ski and Snowboard slope style is a judged event that integrates a variety of jib features (rails, boxes, etc.) and jump (tables, big-air, etc.) features as competitors go down the course, with two or more lines that they may choose.

The distance between the features should allow a smooth transition and performance. The ideal Slopestyle course should be technically challenging, with a wide variety and balance of features in diverse combinations.

The duration of the performance can be between 45 and 90 seconds based upon the course length and the number of elements.

The competition consists of two phases: qualification phase and final phase. Scores from one phase are not carried over to the next phase.

In the qualification, all competitors are randomly sorted on the start list.

Each competitor is allowed to take two runs and the result from the better run is used to rank each competitor.

12 competitors will advance from the qualifications to the final. The competitors run in reverse order for each of the 2 rounds in the final.

Freestyle Skiing: For each run, the judges' scores are averaged.

If any phase cannot be completed, the results from the previous phase will be used to determine the final standings.

Snowboarding: The competitors' performance is evaluated on the overall impression of the quality of the run from start to finish

For each run the highest and lowest of the seven judges' scores are discarded, and the remaining five scores give an averaged counting score.

If the Heat format is used in the qualification there will be only three judges' with scores averaged and counting per run.

If a Semi Final is held, fifty percent of the finalists will have to qualify through the Semi Finals for the Finals. The other fifty percent will qualify directly out of the qualification phase.

(If any phase cannot be completed, the results from the previous phase might be used to determine the final standings).

3. Competition Formats, Phase and Rounds

As a general overview, there are two types of competitions;

- Head to Head competitions with 2 or more competitors on course at the same time
- Individual competitor challenges the course

Generally, there are two phases in the competitions; a 'qualification' phase and 'final' phase. All competitors start in the qualification phase and based upon the results proceed onto the final phase. In some events, (Cross, Dual Moguls and Parallel) the competitions start with an individual test of the course for the qualification and the final is a head to head format.

There can be sub-phases within either phase. In the qualification phase, all of the competitors take either one or more runs on the course. The starting list is based upon a draw with generally the better competitors starting first in the qualification, while in the final phase the better competitors start last. The results of the qualification phase seed competitors into the final phase or as it is called the 'Final'.

In the final phase, there can be several sub-phases, with a limited number of competitors taking part. The results from different phases are not cumulative, but with each round the competitor starts over with the performance.

The rankings of the competitors that do not advance to the next phase are based upon results from the previous phases.

These formats tend to lead to an exciting tension building competitions, where the viewers get to see the best competitors more often as they progress through the different phases. As the competitive field gets smaller and smaller, it is easier to compare the performances between the different competitors.

In the so-called head-to-head competitions, a limited number of competitors are qualified for the final. The competitors are seeded into different heats based upon the qualifications phase. The top seeded competitors are seeded at the opposite end of the seed, in the final, competitors; the lower ranked competitors are eliminated from the different heats, with the different rounds.

Table of Rounds and Heats in the Head to head Formats

Round	Number of Heats
1/8 Final	8
1/4 Final	4
Semi-Final	2
Final	2 (Small Final and Big Final)

The podium ranking (top 3) is determined in the last round or last sub-phase of the Final.

Competitions are not just a test of skill and athletic performance but also a set of technical and strategically challenges for the competitors and coaches. There tends to be a great amount of interaction between the other team members, coaches creating camaraderie between all of the competitors which lead to interesting emotional interaction.

4. Start Intervals

The maximum interval time between runs varies according to the events. The range is from 70 seconds (moguls / dual mogul, aerials and halfpipe) to 3 minutes (cross)

Typically 20 – 25 seconds are planned between the current competitor while the next competitor prepares for his/her run. This allows for replays of the last performance and the reaction from the competitor when they are given their results

The start intervals shall be determined with the FIS Race Director during the initial site survey, particularly as this will affect the choice of camera positions. Other factors will influence this decision, such as the presence of sponsors and advertising as well as TV production values such as replays and highlights.

Direct communication is established between the FIS Race Director and the TV director. The FIS Race Director will inform the HB about any delays, injury status of competitors and course holds for repairs and other incidents that may prevent the competition from moving forward according to the rundown sheet.

Table of Start Interval Times for the Different Events

Events / Disciplines	Qualification	Final
Moguls and Dual Moguls	75 to 120 seconds	90 to 120 seconds
Aerials / Big Air	75 to 120 seconds	75 to 120 seconds
Parallel (PGS, PSL)	60 to 120 seconds	75 to 120 seconds
Halfpipe	60 to 90 seconds	90 to 120 seconds
Cross	180 to 300 seconds	160 to 360
Slope	120 to 360 seconds	120 to 360 seconds

5. Competition Breaks

Natural competition breaks are part of the running of the competition or are caused by internal or external circumstances beyond the control of the operation of the competition.

Turn-around time

The Turnaround time is, the total time it takes to start and complete a run and arrive back to the start area.

This includes, the time of the run, the time it takes from the finish area to the ski lift, the lift time and the time it takes from the end of lift station to return to the start.

Also, there is the turn-around time on lift system within the final phase of the head to head competitions. The competitors cannot just arrive back to the start and then prepare to leave again. Sometimes they need to change equipment and get instructions from the coaches.

The natural breaks occur towards the end of the competition, and after the semi-final, when the last qualified competitors start directly in the next heat.

Weather delays or course holds

Weather delays occur during the competition, due to snow fall, fog / clouds or flat light. In these cases the competition sequence will be stopped and will then continue when the conditions permit.

Crashes and Injuries

Crashes and injuries do occur and sometimes it takes time to determine the nature of the injury and then prepare the predefined evacuation of the competitor from the course.

On some occasions, the course safety material needs to be fixed.

Course maintenance and Repair

On-going maintenance of the course line, jumps or gates is needed at times based upon the circumstances. Short delays can occur as a natural part of organising the competition.

Jury Decisions

The competition jury, which controls the rules and operation of the competition, needs to make decisions about the running of the competition and the status of the results and the ranking of the competitors. Short breaks can be expected in the operation of the competition.

6. Specific elements of TV Coverage

6.1 Starting Area

The start area is divided into several functional areas with access control limiting the numbers in the specific zones.

Interesting interactions, preparation of competition equipment and the warm-up procedures of the competitors can be seen in the pre-start area.

In the start area, there will be interaction with coaches, up to a certain point, then the placing of the skiers/snowboarders into the start gate by the start officials. This is followed by the start sequence.

6.2 On Course

The competitor(s) must be covered during the full performance from the start of the course to the finish.

At times the competitors cannot complete their run and they are required to stop and exit the course, where possible.

6.3 Finish Line

As the competitor(s) cross the finish line, there can be a lot of emotional content both with the competitor(s) that have finished the run and also from the other competitors waiting to see if they have been beaten or have maintained their ranking.

6.4 Line Up

During the final phase, the top 3 ranked competitors are lined up, with 3rd ranked competitor closest to the finish gate.

As the next skier/snowboarder enters the finish area they are lined up near the other competitors, and then they await the confirmation and ranking for the performance. During this time, the replay of the run is shown.

6.5 Reaction

The timing of the presentation of the result, is coordinated between the tv graphics, scoreboard and the announcer.

There will be a reaction of the competitors to their performance and ranking. The other competitors congratulate them (perhaps) and as the ranking of the competitors change the competitor(s), line-up changes and some then leaves the finish area.

7. Special TV Production requirements

7.1 Video Control

Video control: the Jury must have the possibility for a technical video review of the entire Qualification and Finals.

Therefore an adequate camera set up is required for Qualifications.

For Ski Cross, Snowboard Cross, Parallel Giant Slalom and Parallel Slalom, a separate EVS (or similar set up or a dedicated position next to an EVS operator) for the official FIS Video Controller is required, to be able to review any race scene in slow motion (ideally from different camera angles).

The position for the Video Control as well as the communication either by radio or intercom will be established prior to the first qualification phase.

7.2 Slopestyle TV Production for Judging Purposes

The Ski and Snowboard Slopestyle competitions are judged on the basis of the television feed. Consequently, an adequate camera set up and television production is required for trainings and qualifications already.

7.3 Monitor Requirements

For events' coordination purposes, the following monitors of an adequate dimension and with an appropriate connection to the international world feed (with graphics) are required at the venues:

7.3.1 Moguls / Dual Moguls

- 1 monitor at the exit gate – Race Director
- 1 monitor in the Judges stand
- 1 monitor at the start

7.3.2 Aerials

- 1 monitor in the Judges stand – Race Director

7.3.3 Parallel Giant Slalom / Parallel Slalom

- 1 monitor halfway down the course, on a good live view position – Race Director
- NB: one monitor will have to be provided also to the event's announcer for each competition – the above list DOES NOT include FIS Data & Timing requirements.*

7.3.4 Halfpipe

- 1 monitor at the start
- 1 monitor at the exit gate – Race Director
- 1 monitor in the Judges stand

7.3.5 Freestyle Ski and Snowboard Cross

- 1 monitor at the exit gate – Race Director
 - 1 monitor at the start
- Additional for SBX: 1 monitor halfway down the course, on a good live view position – Race Director

7.3.6 Slopestyle

- 2 monitors in the judges stand;
- 1 monitor in the exit gate – Race Director
- 1 monitor at the start

8. Awards Presentation

This element of the competition is done on site, in the finish area, directly after the end of the competition. See the rundown for the timing after the end of the competition.

Outlined below is the rundown for the competition.

16:00:00	AWARDS CEREMONY	ACTION / AUDIO
0:01:00	Athletes gathering	<ul style="list-style-type: none"> • FIS/LOC gathers the athletes close to the podium stage and gives OK to proceed
0:00:10	FIS anthem	<ul style="list-style-type: none"> • FIS anthem is played
0:00:10	Introduction of the Ladies Awards	<ul style="list-style-type: none"> • <i>Announcer: Ladies and Gentlemen we are now ready for the presentation of the Ladies winners of the FIS World Cup competition here in....</i>
0:01:00	Introduction of the 3rd place	<ul style="list-style-type: none"> • Athlete in 3rd place moves to the podium stage • Announcer: in third place of the FIS World Cup competition in is..... Presenting the bronze medal is Mr.....
0:01:00	Introduction of the 2nd place	<ul style="list-style-type: none"> • Athlete in 2nd place moves to the podium stage • Announcer: in second place of the FIS World Cup competition in is..... Presenting the silver medal is Mr.....
0:01:00	Introduction of the 1st place	<ul style="list-style-type: none"> • Athlete in 1st place moves to the podium stage • Announcer: in first place of the FIS World Cup competition in..... is..... Presenting the gold medal is Mr.....
0:00:10	Ovation	<ul style="list-style-type: none"> • Announcer: Ladies and Gentlemen let's congratulate the winners of the FIS World Cup competition in • Athletes are motioned to move closer to each other
0:01:00	Ladies Photo session	<ul style="list-style-type: none"> • the Host Broadcast camera moves back • top 3 Ladies are on the podium with medals/flowers/skis up • photographers take pictures
0:01:00	Ladies World Cup Leader	<ul style="list-style-type: none"> • Announcer: Ladies and Gentlemen please welcome the new leader of FIS World Cup (name) from (Nation)..... • Athletes are motioned to move closer to each other
0:00:30	End of Ladies Awards	<ul style="list-style-type: none"> • Announcer: Thank you Ladies. Top 3 Ladies please stay with us for the overall picture and FIS interviews. • top 3 Ladies are stepping off the podium
0:00:10	FIS anthem	<ul style="list-style-type: none"> • FIS anthem is played
0:00:10	Introduction of the Men Awards	<ul style="list-style-type: none"> • <i>Announcer: Ladies and Gentlemen we are now ready for the presentation of the Men winners of the FIS World Cup competition here in....</i>
0:01:00	Introduction of the 3rd place	<ul style="list-style-type: none"> • Athlete in 3rd place moves to the podium stage • Announcer: in third place of the FIS World Cup competition in is..... Presenting the bronze medal is Mr.....

0:01:00	Introduction of the 2nd place	<ul style="list-style-type: none"> • Athlete in 2nd place moves to the podium stage • Announcer: in second place of the FIS World Cup competition in is..... Presenting the silver medal is Mr.....
0:01:00	Introduction of the 1st place	<ul style="list-style-type: none"> • Athlete in 1st place moves to the podium stage • Announcer: in first place of the FIS World Cup competition in is..... Presenting the gold medal is Mr.....
0:00:10	Ovation	<ul style="list-style-type: none"> • Announcer: Ladies and Gentlemen let's congratulate the winners of the FIS World Cup competition in • Athletes are motioned to move closer to each other
0:01:00	Men Photo session	<ul style="list-style-type: none"> • the Host Broadcast camera moves back • top 3 Men are on the podium with medals/flowers/skis up • photographers take pictures
0:01:00	Ladies World Cup Leader	<ul style="list-style-type: none"> • Announcer: Ladies and Gentlemen please welcome the new leader of FIS World Cup (name) from (Nation) • Athletes are motioned to move closer to each other
0:00:30	End of Men Awards	<ul style="list-style-type: none"> • Announcer: Thank you Gentlemen. Top 3 Gentleman please stay with us for the overall picture and FIS interviews. • top 3 Men are stepping off the podium
0:01:00	Overall picture	<ul style="list-style-type: none"> • Announcer: Top 3 Ladies and Gentlemen please step up on the podium for overall picture • top 3 Ladies and Men are reaching the podium • Announcer: Ladies and Gentlemen let's congratulate once again the medalists of the FIS World Cup competition in
0:00:30	Overall photo session	<ul style="list-style-type: none"> • the Host Broadcast camera moves back and international live feed closes • photographers take pictures
0:00:30	End of Awards	<ul style="list-style-type: none"> • Announcer: Thank you Ladies and Gentlemen. Top 3 Ladies and Top 3 Men please proceed to FIS News interviews. • top 3 Ladies and Men are stepping off the podium - interviews are carried out c/o podium backdrop
16:14:30		

9. Coverage Philosophy, TV cameras and running orders

Moguls / Dual Moguls Competitions

Key Points to Consider – MOGULS DUAL MOGULS
Use handheld cameras to be more flexible and to be as close as possible to the action
Use low angle camera positions to be more dramatic, never hide the vertical drop
Consider coach reaction at the start and after the run
Keep an eye on the mogul, consider the speed
Consider evolution and landing of the jump
Capture the atmosphere and enthusiasm of the spectators
Be creative, Be innovative, this is freestyle skiing and snowboarding

Moguls / Dual Camera Description (minimum 6 cameras)

No.	Type	Lens	Mount	Location	Coverage
1	Hand-held	11 x 4.5	N/A	At start	Warming up, getting ready for next run, coach interaction, start sequence
2	Hand-held	22 x 7.6	N/A	At 1 st Jump	Start, first jump
3	Hand-held	22 x 7.6	N/A	At 2 nd Jump	2 nd jump, approach, mogul
4	Hand-held	11 x 4.5	N/A	Finish Area	Competitor coming into finish area and stopping, line up, reaction to scores
5	Hand-held	11 x 4.5	N/A	Exit Gate / Kiss and Cry	Reaction of other competitors to run, exit
6	Hard	72 x 9.3	Tripod	Judges stand scaffolding at end of finish area	Main Coverage, action, same view as judges, Awards Ceremonies

CAMERA PLANS – EXAMPLE:
EXAMPLES OF RUN DOWN



MULTILATERAL RUNNING ORDER -MOGULS EXAMPLE

	IN (GMT)	IN (local time: GMT+1)	OUT	DURATION (h.mm.ss)	ON SCREEN	SOURCE
	13:50:00	12:50:00		01:40:10	Start of the International Feed	
OPENING	13:50:00	12:50:00	13:00:00	00:10:00	OPENING SEQUENCE	
		12:50:00	12:52:00	00:02:00	Beauty shots / Warming up	Live
		12:52:00	12:52:20	00:00:20	FS & INFRONT animation	Tape
		12:52:20	12:53:20	00:01:00	Beauty shots / Title event	Live / Graphics
		12:53:20	12:54:20	00:01:00	Venue presentation	Tape
		12:54:20	12:55:55	00:01:35	Wide shot: atmosphere at the venue / Event Calendar	Live / Graphics
		12:55:55	12:56:20	00:00:25	Weather conditions / Course details	Live / Graphics
		12:56:20	12:56:45	00:00:25	Current Ladies' Moguls World Cup Standings	Live / Graphics
		12:56:45	12:57:15	00:00:30	Beauty shots / Ladies' Final 1 Start List (12 athletes)	Live / Graphics
		12:57:15	12:59:15	00:02:00	Beauty shots + FIS Race Director+ TV Director and TV production	Live / Graphics
		12:59:15	13:00:00	00:00:45	Close-ups & warm-ups and Start gate	Live
RACE	14:00:00	13:00:00	14:16:30	01:16:30	RACE SEQUENCE	
		13:00:00	13:06:00	00:06:00	Final 1: Ladies 1-4	Live / EVS / Graphics
		13:06:00	13:06:30	00:00:30	Ministanding + slomo current leader	Live / EVS / Graphics
		13:06:30	13:12:30	00:06:00	Final 1: Ladies 5-8	Live / EVS / Graphics
		13:12:30	13:13:00	00:00:30	Ministanding + slomo current leader	Live / EVS / Graphics
		13:13:00	13:19:00	00:06:00	Final 1: Ladies 9-12	Live / EVS / Graphics
		13:19:00	13:20:00	00:01:00	Results Ladies Final 1 + slomo current leader	Live / EVS / Graphics
		13:20:00	13:20:30	00:00:30	Beauty shots / Men's Final 1 Start List (12 athletes)	Live / Graphics
		13:20:30	13:26:30	00:06:00	Final 1: Men 1-4	Live / EVS / Graphics
		13:26:30	13:27:00	00:00:30	Ministanding + slomo current leader	Live / EVS / Graphics
		13:27:00	13:33:00	00:06:00	Final 1: Men 5-8	Live / EVS / Graphics
		13:33:00	13:33:30	00:00:30	Ministanding + slomo current leader	Live / EVS / Graphics
		13:33:30	13:39:30	00:06:00	Final 1: Men 9-12	Live / EVS / Graphics
		13:39:30	13:40:30	00:01:00	Results Men Final 1 + slomo current leader	Live / EVS / Graphics
		13:40:30	13:43:00	00:02:30	Info Break: close-ups in the finish area	Live / Graphics
		13:43:00	13:43:30	00:00:30	Ladies' Super Final Start List	
		13:43:30	13:55:30	00:12:00	Super Final: Ladies 1-6	Live / EVS / Graphics
		13:55:30	13:59:45	00:04:15	Winners Celebration + Results List + slowmos best 3 Ladies	Live / EVS / Graphics
		13:59:45	14:00:15	00:00:30	Men's Super Final Start List	Live / EVS / Graphics
		14:00:15	14:12:15	00:12:00	Super Final: Men 1-6	Live / EVS / Graphics
	14:12:15	14:16:30	00:04:15	Winners Celebration + Results List + slowmos best 3 Men	Live / EVS / Graphics	
CLOSING	15:16:30	14:16:30	14:30:10	00:13:40	CLOSING SEQUENCE	
		14:16:30	14:17:30	00:01:00	Winners celebration / Atmosphere at the venue	Live / Graphics
		14:17:30	14:18:30	00:01:00	Emotional clip	Tape
		14:18:30	14:19:00	00:00:30	World Cup Standings	Graphics
		14:19:00	14:24:00	00:05:00	Flower Ceremony - Ladies (3-1)	Live / Graphics
		14:24:00	14:29:00	00:05:00	Flower Ceremony - Men (3-1)	Live / Graphics
		14:29:00	14:29:20	00:00:20	Beauty shots + Director + TV production	Live / Graphics
		14:29:20	14:29:50	00:00:30	Next World Cup - dates/location	Live / Graphics
	14:29:50	14:30:10	00:00:20	FS & INFRONT animation	Tape	
	15:30:10		14:30:10		Estimated International Feed closing time	

Local Time: GMT + 01:00:00



MULTILATERAL RUNNING ORDER - DUAL MOGULS EXAMPLE

IN (GMT)	IN (local time: GMT+1)	OUT	DURATION (h.mm.ss)	ON SCREEN	SOURCE	
11:50:00	12:50:00		01:22:10	Start of the International Feed		
OPENING SEQUENCE						
OPENING	11:50:00	12:50:00	13:00:00	00:10:00		
		12:50:00	12:53:00	00:03:00	Beauty shots / Warming up	Live
		12:53:00	12:53:20	00:00:20	FS & INFRONT animation	Tape
		12:53:20	12:53:50	00:00:30	Beauty shots / Title event	Live / Graphics
		12:53:50	12:54:20	00:00:30	Venue presentation	Tape
		12:54:20	12:56:20	00:02:00	Wide shot: atmosphere at the venue / Event calendar	Live / Graphics
		12:56:20	12:56:45	00:00:25	Weather conditions / Course details	Live / Graphics
		12:56:45	12:57:15	00:00:30	Beauty shots / Ladies' Final Start List (16 athletes)	Live / Graphics
		12:57:15	12:59:15	00:02:00	Beauty shots + FS Race Director + TV Director and TV production	Live / Graphics
	12:59:15	13:00:00	00:00:45	Close-ups & warm-ups and Start gate	Live	
RACE SEQUENCE						
RACE	12:00:00	13:00:00	13:58:30	00:58:30		
		13:00:00	13:12:00	00:12:00	Race: Ladies' round of 16 (8 runs; 2 athletes each run)	Live / EVS / Graphics
		13:12:00	13:12:30	00:00:30	Men's Start List (16)	Live / Graphics
		13:12:30	13:24:30	00:12:00	Race: Men's round of 16 (8 runs; 2 athletes each run)	Live / EVS / Graphics
		13:24:30	13:30:30	00:06:00	Title Ladies' Quarter Final + Race: Ladies' Quarter-Final (4 runs; 2 athletes each run)	Live / EVS / Graphics
		13:30:30	13:36:30	00:06:00	Title Men's Quarter Final + Race: Men's Quarter-Final (4 runs; 2 athletes each run)	Live / EVS / Graphics
		13:36:30	13:38:30	00:02:00	Info Break: close-ups in the finish area	Live / EVS / Graphics
		13:38:30	13:41:30	00:03:00	Title Ladies' Semi Final + Race: Ladies' Semi-Final (2 runs; 2 athletes each run)	Live / EVS / Graphics
		13:41:30	13:44:30	00:03:00	Title Men's Semi Final + Race: Men's Semi-Final (2 runs; 2 athletes each run)	Live / EVS / Graphics
		13:44:30	13:46:30	00:02:00	Info Break: close-ups in the finish area	Live / EVS / Graphics
		13:46:30	13:48:00	00:01:30	Title Ladies' Small Final + Race: Ladies' Small-Final (round for 3rd and 4th place)	Live / EVS / Graphics
		13:48:00	13:49:30	00:01:30	Title Ladies' Final + Race: Ladies' Final	Live / EVS / Graphics
		13:49:30	13:52:30	00:03:00	Results List + Winners Celebration + slowmos best 3 Ladies	Live / EVS / Graphics
		13:52:30	13:54:00	00:01:30	Title Men's Small Final + Race: Men's Small-Final (round for 3rd and 4th place)	Live / EVS / Graphics
		13:54:00	13:55:30	00:01:30	Title Men's Final + Race: Men's Final	Live / EVS / Graphics
	13:55:30	13:58:30	00:03:00	Results List + Winners Celebration + slowmos best 3 Men	Live / EVS / Graphics	
CLOSING SEQUENCE						
CLOSING	12:58:30	13:58:30	14:12:10	00:13:40		
		13:58:30	13:59:30	00:01:00	Atmosphere at the venue	Live
		13:59:30	14:00:30	00:01:00	Emotional clip	Tape
		14:00:30	14:01:00	00:00:30	World Cup Standings	Live / Graphics
		14:01:00	14:06:00	00:05:00	Podium Ceremony - Ladies	Live / Graphics
		14:06:00	14:11:00	00:05:00	Podium Ceremony - Men	Live / Graphics
		14:11:00	14:11:20	00:00:20	Beauty shots + Director + TV production	Live / Graphics
		14:11:20	14:11:50	00:00:30	Next World Cup - dates/location	Live / Graphics
	14:11:50	14:12:10	00:00:20	FS & INFRONT animation	Tape	
13:12:10		14:12:10		Estimated International Feed closing time		

Local Time: GMT + 01:00:00

Aerials and Big Air

Key Points to Consider – AERIALS
Consider the length, height and the landing of the jump
Generally position cameras in a low position for dramatic and spectacular effect
There is a direct interaction between aerialists on and run and the coach on no area before the competitor starts. Final instructions are given concerning the inrun speed
Consider the coach reaction, during the jump and reaction to landing
Capture the atmosphere and enthusiasm of the spectators
A wide shot tends to show the height of aerialist in relation to jump and judges
Super slow motion of the landing showing the positions of the aerialist is very interesting.
Be creative, Be innovative, this is freestyle skiing and snowboarding

Aerials and Big Air Camera Description (minimum 6 cameras)

No.	Type	Lens	Mount	Location	Coverage
1	Hand-held	11 x 4.5	N/A	At start	Warming up, getting ready for next run, coach interaction, start sequence
2	Hand-held	22 x 7.6	LW Tripod	Judges stand scaffolding	Jump
3	Hand-held	22 x 7.6	LW Tripod	Coaches Area	Coaches reaction, Jump isolation, replies
4	Hand-held	11 x 4.5	NA	Finish Area	Competitor coming into finish area and stopping, line up, reaction to scores
5	Hand-held	11 x 4.5	N/A	Exit Gate / Kiss and Cry	Reaction of other competitors to run, exit, crowd shots, atmosphere
6	Hard	72 x 9.3	HW Tripod	Scaffolding at end of finish area	Main Coverage, action, landing of aerialist. Awards Ceremony

CAMERA PLANS – EXAMPLE:
EXAMPLES OF RUN DOWN



MULTILATERAL RUNNING ORDER - AERIALS EXAMPLE

	IN (GMT)	IN (local time: GMT +1)	OUT	DURATION (h.mm.ss)	ON SCREEN	SOURCE
	11:50:00	12:50:00		01:29:10	Start of the International Feed	
OPENING	11:50:00	12:50:00	13:00:00	00:10:00	OPENING SEQUENCE	
		12:50:00	12:52:00	00:02:00	Beauty shots / Warming up	Live
		12:52:00	12:52:20	00:00:20	FS & INFRONT animation	Tape
		12:52:20	12:52:50	00:00:30	Beauty shots / Title event	Live / Graphics
		12:52:50	12:53:50	00:01:00	Venue presentation	Tape
		12:53:50	12:55:50	00:02:00	Wide shot: atmosphere at the venue / Event calendar	Live / Graphics
		12:55:50	12:56:15	00:00:25	Weather conditions / Course details	Live / Graphics
		12:56:15	12:56:45	00:00:30	Current Ladies' Aerials World Cup Standings	Live / Graphics
		12:56:45	12:57:15	00:00:30	Beauty shots / Ladies' Final 1 Start List (12 athletes)	Live / Graphics
		12:57:15	12:59:15	00:02:00	Beauty shots + FS Race Director + TV Director and TV production	Live / Graphics
		12:59:15	13:00:00	00:00:45	Close-ups & warm-ups and Start gate	Live
RACE	12:00:00	13:00:00	14:05:10	01:05:10	RACE SEQUENCE	
		13:00:00	13:10:00	00:10:00	Final 1: Ladies 1-6	Live / EVS / Graphics
		13:10:00	13:10:30	00:00:30	Ministanding + slomo current leader	EVS / Graphics
		13:10:30	13:20:30	00:10:00	Final 1: Ladies 7-12	Live / EVS / Graphics
		13:20:30	13:21:30	00:01:00	Results Ladies Final 1 + slomo currently in 3rd, 2nd, 1st	Live / EVS / Graphics
		13:21:30	13:22:00	00:00:30	Current Men's Aerials World Cup Standings	Live / Graphics
		13:22:00	13:22:30	00:00:30	Beauty shots / Men's Final 1 Start List (12 athletes)	Live / Graphics
		13:22:30	13:32:30	00:10:00	Final 1: Men 1-6	Live / EVS / Graphics
		13:32:30	13:33:00	00:00:30	Ministanding + slomo current leader	EVS / Graphics
		13:33:00	13:43:00	00:10:00	Final 1: Men 7-12	Live / EVS / Graphics
		13:43:00	13:44:00	00:01:00	Results Men Final 1 + slomo currently in 3rd, 2nd, 1st	Live / EVS / Graphics
		13:44:00	13:45:30	00:01:30	Info Break: close-ups in the finish area	Live
		13:45:30	13:45:40	00:00:10	Ladies' Super Final Start List	Live / EVS / Graphics
		13:45:40	13:52:20	00:06:40	Super Final: Ladies 1-4	Live / EVS / Graphics
		13:52:20	13:55:20	00:03:00	Winners Celebration + Final Results List + slowmos best 3 Ladies	Live / EVS / Graphics
		13:55:20	13:55:30	00:00:10	Men's Super Final Start List	Live / EVS / Graphics
		13:55:30	14:02:10	00:06:40	Super Final: Men 1-4	Live / EVS / Graphics
		14:02:10	14:05:10	00:03:00	Winners Celebration + Final Results List + slowmos best 3 Men	Live / EVS / Graphics
CLOSING	13:05:10	14:05:10	14:19:10	00:14:00	CLOSING SEQUENCE	
		14:05:10	14:06:30	00:01:20	Atmosphere at the venue	Live / Graphics
		14:06:30	14:07:30	00:01:00	Emotional clip	Tape
		14:07:30	14:08:00	00:00:30	World Cup Standings	Live / Graphics
		14:08:00	14:13:00	00:05:00	Podium Ceremony - Ladies (3-1)	Live / Graphics
		14:13:00	14:18:00	00:05:00	Podium Ceremony - Men (3-1)	Live / Graphics
		14:18:00	14:18:20	00:00:20	Beauty shots + Director + TV production	Live / Graphics
		14:18:20	14:18:50	00:00:30	Next World Cup - dates/location	Live / Graphics
	14:18:50	14:19:10	00:00:20	FS & INFRONT animation	Tape	
	13:19:10		14:19:10	Estimated International Feed closing time		

Local Time: GMT + 01:00:00

Snowboard Parallel Giant Slalom and Parallel Slalom

Key Points to Consider – PARALLEL events
Use handheld cameras to be more flexible and to be as close as possible to the action
First turn rule, everything happens at the beginning
Consider the camera cutting sequence when positioning the cameras
Capture the atmosphere and enthusiasm of the spectators
Long shots can be used to show the position and relationship between the different competitors on the course
Passing can occur everywhere along the course. It is considered one key element of the parallel event once one competitor is coming back after a mistake and passes
During slomos music background should be appropriate to keep alive the emotion
Be creative, Be innovative, this is freestyle skiing and snowboarding

Parallel Giant Slalom and Parallel Slalom Camera Description (minimum 10 cameras)

No.	Type	Lens	Mount	Location	Coverage
1	Hand-held	11 x 4.5	N/A	At start	Warming up, getting ready for next run, coach interaction, head and shoulder shot of each competitor, start sequence
2	Hard	72 x 7.6	Tripod	Scaffolding 3 m	Start Structure, 1 st feature
3	Hand-held	72 x 7.6	LW Tripod	1 st Section	Action
4	Hand-held	72 x 7.6	LW Tripod	2 nd Section	Action
5	Hand-held	72 x 7.6	LW Tripod	3 rd Section	Action
6	Hand-held	72 x 7.6	LW Tripod	4 th Section	Action (optional)
8	Hand-held	72 x 7.6	NA	Finish Area	Competitor coming into finish area and stopping, line up, reaction to scores
10	Hard	72 x 9.3	HW Tripod	Scaffolding at end of finish area	Main Coverage, action, last feature, Awards ceremony.

* Due to the shorter length of the PSL course, fewer cameras are needed

CAMERA PLANS – EXAMPLE:
EXAMPLES OF RUN DOWN



MULTILATERAL RUNNING ORDER - PARALLEL GIANT SLALOM EXAMPLE

	IN (GMT)	IN (local time: GMT+1)	OUT	DURATION (h.mm.ss)	ON SCREEN	SOURCE
	11:50:00	12:50:00		02:14:53	Start of the International Feed	
OPENING	11:50:00	12:50:00	13:00:00	00:10:00	OPENING SEQUENCE	
		12:50:00	12:54:15	00:04:15	Beauty shots	Live
		12:54:15	12:54:38	00:00:23	FIS & Infront animation	Tape
		12:54:38	12:54:53	00:00:15	Beauty shots / Title event	Live / Graphics
		12:54:53	12:55:53	00:01:00	Location presentation	Tape
		12:55:53	12:56:53	00:01:00	Beauty shots / Title event	Live / Graphics
		12:56:53	12:57:08	00:00:15	Weather conditions / Course details	Live / Graphics
		12:57:08	12:57:53	00:00:45	Beauty shots / atmosphere at the start	Live
		12:57:53	12:58:23	00:00:30	Start List Ladies 1/8 Finals (Run 1)	Live / Graphics
		12:58:23	12:59:03	00:00:40	FIS Race Director, TV Director and TV production	Live / Graphics
	12:59:03	13:00:00	00:00:57	Close-ups & warm-ups and Start gate	Live	
RACE	12:00:00	13:00:00	14:54:50	01:54:50	RACE SEQUENCE	
		13:00:00	13:12:40	00:12:40	Ladies 1/8 Finals (Run 1) heat 1-8 + Start List Men 1/8 Finals (Run 1)	Live / EVS / Graphics
		13:12:40	13:25:20	00:12:40	Men 1/8 Finals (Run 1) heat 1-8 + Title Ladies 1/8 Finals Run 2	Live / EVS / Graphics
		13:25:20	13:38:00	00:12:40	Ladies 1/8 Finals (Run 2) heat 1-8 + Results + Title Men 1/8 Finals Run 2	Live / EVS / Graphics
		13:38:00	13:50:40	00:12:40	Men 1/8 Finals (Run 2) heat 1-8 + Results + Start List Ladies Quarter Finals (Run 1)	Live / EVS / Graphics
		13:50:40	13:57:00	00:06:20	Ladies QUATERFINAL (Run 1) heats 1-4 + Start List Men Quarter Finals (Run 1)	Live / EVS / Graphics
		13:57:00	14:03:20	00:06:20	Men QUATERFINAL (Run 1) heats 1-4 + Title Ladies Quarter Finals Run 2	Live / EVS / Graphics
		14:03:20	14:09:40	00:06:20	Ladies QUATERFINAL (Run 2) heats 1-4 + Results + Title Men Quarter Finals Run 2	Live / EVS / Graphics
		14:09:40	14:16:00	00:06:20	Men QUATERFINAL (Run 2) heats 1-4 + Results	Live / EVS / Graphics
		14:16:00	14:18:00	00:02:00	Info Break: close-ups in the finish area	Live
		14:18:00	14:21:30	00:03:30	Start List Ladies Semifinals (Run 1) + Ladies SEMIFINALS (Run 1) heats 5-6	Live / EVS / Graphics
		14:21:30	14:25:00	00:03:30	Start List Men Semifinals (Run 1) + Men SEMIFINALS (Run 1) heats 5-6	Live / EVS / Graphics
		14:25:00	14:28:30	00:03:30	Title Ladies Semifinals Run 2 + Ladies SEMIFINALS (Run 2) heats 5-6 + Results	Live / EVS / Graphics
		14:28:30	14:32:00	00:03:30	Title Men Semifinals Run 2 + Men SEMIFINALS (Run 2) heats 5-6 + Results	Live / EVS / Graphics
		14:32:00	14:34:00	00:02:00	Info Break: close-ups in the finish area	Live
		14:34:00	14:36:10	00:02:10	Start List Ladies Small Final (Run 1) + Ladies SMALL FINAL (Run 1) heat 7	Live / EVS / Graphics
		14:36:10	14:38:20	00:02:10	Start List Ladies Final (Run 1) + Ladies FINAL (Run 1) heat 8	Live / EVS / Graphics
		14:38:20	14:40:30	00:02:10	Start List Men Small Final (Run 1) + Men SMALL FINAL (Run 1) heat 7	Live / EVS / Graphics
		14:40:30	14:42:40	00:02:10	Start List Men Final (Run 1) + Men FINAL (Run 1) heat 8	Live / EVS / Graphics
		14:42:40	14:44:40	00:02:00	Info Break: close-ups in the finish area	Live
		14:44:40	14:46:50	00:02:10	Title Ladies Small Final Run 2 + Ladies SMALL FINAL (Run 2) heat 7 + Results	Live / EVS / Graphics
		14:46:50	14:49:00	00:02:10	Title Ladies Final Run 2 + Ladies FINAL (Run 2) heat 8 + Results	Live / EVS / Graphics
		14:49:00	14:50:30	00:01:30	Ladies - Winners celebration	Live
	14:50:30	14:52:40	00:02:10	Title Men Small Final Run 2 + Men SMALL FINAL (Run 2) heat 7 + Results	Live / EVS / Graphics	
	14:52:40	14:54:50	00:02:10	Title Men Final Run 2 + Men FINAL (Run 2) heat 8 + Results	Live / EVS / Graphics	
CLOSING	13:54:50	14:54:50	15:04:53	00:10:03	CLOSING SEQUENCE	
		14:54:50	14:56:20	00:01:30	Men - Winners celebration	Live
		14:56:20	14:58:20	00:02:00	World Cup Ranking and Standings Ladies + Men	Live / Graphics
		14:58:20	14:59:30	00:01:10	Final clip + music	Tape
		14:59:30	15:02:00	00:02:30	Podium Ceremony Ladies 3-1	Live / Graphics
		15:02:00	15:04:30	00:02:30	Podium Ceremony Men 3-1	Live / Graphics
	15:04:30	15:04:53	00:00:23	FIS & Infront animation	Tape	
	14:04:53	15:04:53		Estimated International Feed closing time		

Local Time: GMT + 01:00:00



	IN (GMT)	IN (local time: GMT+1)	OUT	DURATION (h:mm:ss)	ON SCREEN	SOURCE
	11:50:00	12:50:00		02:14:53	Start of the International Feed	
OPENING	11:50:00	12:50:00	13:00:00	00:10:00	OPENING SEQUENCE	
		12:50:00	12:54:15	00:04:15	Beauty shots	Live
		12:54:15	12:54:38	00:00:23	FIS & Infront animation	Tape
		12:54:38	12:54:53	00:00:15	Beauty shots / Title event	Live / Graphics
		12:54:53	12:55:53	00:01:00	Location presentation	Tape
		12:55:53	12:56:53	00:01:00	Beauty shots / Title event	Live / Graphics
		12:56:53	12:57:08	00:00:15	Weather conditions / Course details	Live / Graphics
		12:57:08	12:57:53	00:00:45	Beauty shots / atmosphere at the start	Live
		12:57:53	12:58:23	00:00:30	Start List Ladies 1/8 Finals (Run 1)	Live / Graphics
		12:58:23	12:59:03	00:00:40	FIS Race Director, TV Director and TV production	Live / Graphics
	12:59:03	13:00:00	00:00:57	Close-ups & warm-ups and Start gate	Live	
RACE	12:00:00	13:00:00	14:54:50	01:54:50	RACE SEQUENCE	
		13:00:00	13:12:40	00:12:40	Ladies 1/8 Finals (Run 1) heat 1-8 + Start List Men 1/8 Finals (Run 1)	Live / EVS / Graphics
		13:12:40	13:25:20	00:12:40	Men 1/8 Finals (Run 1) heat 1-8 + Title Ladies 1/8 Finals Run 2	Live / EVS / Graphics
		13:25:20	13:38:00	00:12:40	Ladies 1/8 Finals (Run 2) heat 1-8 + Results + Title Men 1/8 Finals Run 2	Live / EVS / Graphics
		13:38:00	13:50:40	00:12:40	Men 1/8 Finals (Run 2) heat 1-8 + Results + Start List Ladies Quarter Finals (Run 1)	Live / EVS / Graphics
		13:50:40	13:57:00	00:06:20	Ladies QUARTERFINALS (Run 1) heats 1-4 + Start List Men Quarter Finals (Run 1)	Live / EVS / Graphics
		13:57:00	14:03:20	00:06:20	Men QUARTERFINALS (Run 1) heats 1-4 + Title Ladies Quarter Finals Run 2	Live / EVS / Graphics
		14:03:20	14:09:40	00:06:20	Ladies QUARTERFINALS (Run 2) heats 1-4 + Results + Title Men Quarter Finals Run 2	Live / EVS / Graphics
		14:09:40	14:16:00	00:06:20	Men QUARTERFINALS (Run 2) heats 1-4 + Results	Live / EVS / Graphics
		14:16:00	14:18:00	00:02:00	Info Break: close-ups in the finish area	Live
		14:18:00	14:21:30	00:03:30	Start List Ladies Semifinals (Run 1) + Ladies SEMIFINALS (Run 1) heats 5-6	Live / EVS / Graphics
		14:21:30	14:25:00	00:03:30	Start List Men Semifinals (Run 1) + Men SEMIFINALS (Run 1) heats 5-6	Live / EVS / Graphics
		14:25:00	14:28:30	00:03:30	Title Ladies Semifinals Run 2 + Ladies SEMIFINALS (Run 2) heats 5-6 + Results	Live / EVS / Graphics
		14:28:30	14:32:00	00:03:30	Title Men Semifinals Run 2 + Men SEMIFINALS (Run 2) heats 5-6 + Results	Live / EVS / Graphics
		14:32:00	14:34:00	00:02:00	Info Break: close-ups in the finish area	Live
		14:34:00	14:36:10	00:02:10	Start List Ladies Small Final (Run 1) + Ladies SMALL FINAL (Run 1) heat 7	Live / EVS / Graphics
		14:36:10	14:38:20	00:02:10	Start List Ladies Final (Run 1) + Ladies FINAL (Run 1) heat 8	Live / EVS / Graphics
		14:38:20	14:40:30	00:02:10	Start List Men Small Final (Run 1) + Men SMALL FINAL (Run 1) heat 7	Live / EVS / Graphics
		14:40:30	14:42:40	00:02:10	Start List Men Final (Run 1) + Men FINAL (Run 1) heat 8	Live / EVS / Graphics
		14:42:40	14:44:40	00:02:00	Info Break: close-ups in the finish area	Live
		14:44:40	14:46:50	00:02:10	Title Ladies Small Final Run 2 + Ladies SMALL FINAL (Run 2) heat 7 + Results	Live / EVS / Graphics
		14:46:50	14:49:00	00:02:10	Title Ladies Final Run 2 + Ladies FINAL (Run 2) heat 8 + Results	Live / EVS / Graphics
		14:49:00	14:50:30	00:01:30	Ladies - Winners celebration	Live
		14:50:30	14:52:40	00:02:10	Title Men Small Final Run 2 + Men SMALL FINAL (Run 2) heat 7 + Results	Live / EVS / Graphics
		14:52:40	14:54:50	00:02:10	Title Men Final Run 2 + Men FINAL (Run 2) heat 8 + Results	Live / EVS / Graphics
	CLOSING	13:54:50	14:54:50	15:04:53	00:10:03	CLOSING SEQUENCE
		14:54:50	14:56:20	00:01:30	Men - Winners celebration	Live
		14:56:20	14:58:20	00:02:00	World Cup Ranking and Standings Ladies + Men	Live / Graphics
		14:58:20	14:59:30	00:01:10	Final clip + music	Tape
		14:59:30	15:02:00	00:02:30	Podium Ceremony Ladies 3-1	Live / Graphics
		15:02:00	15:04:30	00:02:30	Podium Ceremony Men 3-1	Live / Graphics
	15:04:30	15:04:53	00:00:23	FIS & Infront animation	Tape	
	14:04:53		15:04:53	Estimated International Feed closing time		

Local Time: GMT + 01:00:00

Halfpipe - Ski or Snowboard

Key Points to Consider – HALFPIPE
Main camera must show the height of the jump without losing the reference to the deck
During the live coverage after the 1 st jump show the action with the main camera, save the cameras on the deck for the slomos
Capture the atmosphere and enthusiasm of the spectators
During slomos music background should be appropriate to keep alive the emotion
Be creative, Be innovative, this is freestyle skiing and snowboarding

Halfpipe Camera Description (minimum 6 cameras)

No.	Type	Lens	Mount	Location	Coverage
1	Hand-held	11 x 4.5	N/A	At start	Warming up, getting ready for next run, coach interaction, start sequence
2	Hand-held	22 x 7.6	LW Tripod	Deck at first jump / takeoff	Start, 1 st Jump , replays
3	Hand-held	22 x 7.6	LW Tripod	Deck at 4th jump / takeoff	Coaches reaction, Jump isolation, replays
4	Hand-held	11 x 4.5	NA	Finish Area	Competitor coming into finish area and stopping, line up, reaction to scores
5	Hand-held	11 x 4.5	N/A	Exit Gate / Kiss and Cry	Reaction of other competitors to run, exit, crowd shots, atmosphere. Awards Ceremony
6	Hard	72 x 9.3	HW Tripod	In a Trench (1 meter deep) in front of judges stand	Main Coverage, action, landing of aerialist.

CAMERA PLANS – EXAMPLE:
EXAMPLES OF RUN DOWN



MULTILATERAL RUNNING ORDER - HALF PIPE EXAMPLE

	IN (GMT)	IN (local time: GMT+1)	OUT	DURATION (h.mm.ss)	ON SCREEN	SOURCE
	11:50:00	12:50:00		01:44:10	Start of the International Feed	
OPENING	11:50:00	12:50:00	13:00:00	00:10:00	OPENING SEQUENCE	
		12:50:00	12:52:30	00:02:30	Beauty shots / Warming up	Live
		12:52:30	12:52:50	00:00:20	FS & INFRONT animation	Tape
		12:52:50	12:53:20	00:00:30	Beauty shots / Title event	Live / Graphics
		12:53:20	12:55:20	00:02:00	Wide shot: atmosphere at the venue / Event calendar	Live
		12:55:20	12:56:20	00:01:00	Venue presentation	Tape
		12:56:20	12:56:45	00:00:25	Weather conditions / Course details	Live / Graphics
		12:56:45	12:57:15	00:00:30	Beauty shots / Ladies' Final Start List Round 1 (12 athletes)	Live / Graphics
		12:57:15	12:59:15	00:02:00	Beauty shots + FS Race Director + TV Director and TV production	Live / Graphics
	12:59:15	13:00:00	00:00:45	Close-ups & warm-ups and Start gate	Live	
RACE	12:00:00	13:00:00	14:20:30	01:20:30	RACE SEQUENCE	
		13:00:00	13:18:00	00:18:00	Race: Ladies' Round 1 + Results Round 1	Live / Graphics
		13:18:00	13:19:15	00:01:15	Info Break: close ups in the finish area	Live / EVS / Graphics
		13:19:15	13:19:45	00:00:30	Men's Start List - Round 1 (12 athletes)	Live / Graphics
		13:19:45	13:37:45	00:18:00	Race: Men's Round 1 + Results Round 1	Live / Graphics
		13:37:45	13:39:00	00:01:15	Info Break: close ups in the finish area	Live / EVS / Graphics
		13:39:00	13:39:30	00:00:30	Ladies' Start List - Round 2	Live / Graphics
		13:39:30	13:57:30	00:18:00	Race: Ladies' Round 2 + Final Results	Live / Graphics
		13:57:30	13:59:45	00:02:15	Winners Celebration + slowmos best 3 Ladies (3rd - 2nd - 1st)	Live / EVS / Graphics
		13:59:45	14:00:15	00:00:30	Men's Start List - Round 2	Live / Graphics
		14:00:15	14:18:15	00:18:00	Race: Men's Round 2 + Final Results	Live / Graphics
	14:18:15	14:20:30	00:02:15	Winners Celebration + slowmos best 3 Men (3rd - 2nd - 1st)	Live / EVS / Graphics	
CLOSING	13:20:30	14:20:30	14:34:10	00:13:40	CLOSING SEQUENCE	
		14:20:30	14:21:30	00:01:00	Atmosphere at the venue	Live
		14:21:30	14:22:30	00:01:00	Emotional clip	Tape
		14:22:30	14:23:00	00:00:30	World Cup Standings	Live / Graphics
		14:23:00	14:28:00	00:05:00	Podium Ceremony - Ladies	Live / Graphics
		14:28:00	14:33:00	00:05:00	Podium Ceremony - Men	Live / Graphics
		14:33:00	14:33:20	00:00:20	Beauty shots + Director + TV production	Live / Graphics
		14:33:20	14:33:50	00:00:30	Next World Cup - dates/location	Live / Graphics
	14:33:50	14:34:10	00:00:20	FS & INFRONT animation	Tape	
	13:34:10		14:34:10	Estimated International Feed closing time		

Local Time: GMT + 01:00:00



MULTILATERAL RUNNING ORDER - HALF PIPE EXAMPLE

	IN (GMT)	IN (local time: GMT+1)	OUT	DURATION (h.mm.ss)	ON SCREEN	SOURCE
	11:50:00	12:50:00		01:32:54	Start of the International Feed	
OPENING	11:50:00	12:50:00	13:00:00	00:10:00	OPENING SEQUENCE	
		12:50:00	12:53:50	00:03:50	Beauty shots	Live
		12:53:50	12:54:15	00:00:25	FS & Infront animation	Tape
		12:54:15	12:54:30	00:00:15	Beauty shots / Title event	Live / Graphics
		12:54:30	12:55:30	00:01:00	Venue presentation	Tape
		12:55:30	12:56:30	00:01:00	Beauty shots / Title event	Live / Graphics
		12:56:30	12:56:45	00:00:15	Weather conditions / Course details	Live / Graphics
		12:56:45	12:57:30	00:00:45	Beauty shots / atmosphere at the start	Live
		12:57:30	12:58:00	00:00:30	Start List Ladies Run 1 (6)	Live / Graphics
		12:58:00	12:59:00	00:01:00	Jury + FIS Race Director, TV Director and TV production	Live / Graphics
	12:59:00	13:00:00	00:01:00	Close-ups & warm-ups and Start gate	Live	
RACE	12:00:00	13:00:00	14:07:30	01:07:30	RACE SEQUENCE	
		13:00:00	13:10:30	00:10:30	Ladies 1-6 Run 1	Live / EVS / Graphics
		13:10:30	13:11:30	00:01:00	Results Run 1 Ladies + Slomotions 1st, 2nd and 3rd	Live / EVS / Graphics
		13:11:30	13:12:00	00:00:30	Start List Men Run 1 (12)	Live / EVS / Graphics
		13:12:00	13:33:00	00:21:00	Men 1-12 Run 1	Live / EVS / Graphics
		13:33:00	13:34:00	00:01:00	Results Run 1 Men + Slomotions 1st, 2nd and 3rd + Title Ladies Run 2	Live / EVS / Graphics
		13:34:00	13:44:30	00:10:30	Ladies 1-6 Run 2	Live / EVS / Graphics
		13:44:30	13:45:30	00:01:00	Final Results Ladies + Slomotions 1st, 2nd and 3rd + Title Men Run 2	Live / EVS / Graphics
		13:45:30	14:06:30	00:21:00	Men 1-12 Run 2	Live / EVS / Graphics
		14:06:30	14:07:30	00:01:00	Final Results Men + Slomotions 1st, 2nd and 3rd	Live / EVS / Graphics
CLOSING	13:07:30	14:07:30	14:22:54	00:15:24	CLOSING SEQUENCE	
		14:07:30	14:09:30	00:02:00	Winners celebration + atmosphere at the venue	Live
		14:09:30	14:11:30	00:02:00	World Cup Ranking and Standings	Live / Graphics
		14:11:30	14:12:30	00:01:00	Final clip + music	Tape
		14:12:30	14:17:30	00:05:00	Podium Ceremony Ladies 3-1	Live / Graphics
		14:17:30	14:22:30	00:05:00	Podium Ceremony Men 3-1	Live / Graphics
		14:22:30	14:22:54	00:00:24	FS & Infront animation	Tape
	13:22:54		14:22:54	Estimated International Feed closing time		

Local Time: GMT + 01:00:00

Cross - Ski or Snowboard

Key Points to Consider – CROSS
Use handheld cameras to be more flexible and to be as close as possible to the action
First turn rule, everything happens at the beginning
Consider the camera cutting sequence when positioning the cameras
Consider always the fight for second place.
Capture the atmosphere and enthusiasm of the spectators
Long shots can be used to show the position and relationship between the different competitors on the course
There will be several key points along the course where passing will occur and this usually happens after a long straight flat section coming to a turn
During slomos music background should be appropriate to keep alive the emotion
Be creative, Be innovative, this is freestyle skiing and snowboarding

Cross Camera Description (minimum 12 cameras)

No.	Type	Lens	Mount	Location	Coverage
1	Hand-held	11 x 4.5	N/A	At start	Warming up, getting ready for next run, coach interaction, head and shoulder shot of each competitor, start sequence
2	Hand-held	11 x 4.5	N/A	At side of 1 st feature	start sequence for 1 st pass of the competitor
3	Hard	72 x 7.6	Tripod	Scaffolding 3 m	Start Structure, 1 st feature
4	Hand-held	72 x 7.6	LW Tripod	2 nd turn	Action
5	Hand-held	72 x 7.6	LW Tripod	3 rd turn	Action
6	Hand-held	72 x 7.6	LW Tripod	4 th turn	Action
7	Hand-held	72 x 7.6	LW Tripod	5 th turn	Action
8	Hand-held	72 x 7.6	LW Tripod	6 th turn	Action
9	Hand-held	72 x 7.6	LW Tripod	7 th turn	Action
10	Hand-held	72 x 7.6	NA	Finish Area	Competitor coming into finish area and stopping, line up, reaction to scores
11	Hand-held	72 x 7.6	N/A	Exit Gate / Kiss and Cry	Reaction of other competitors to run, exit, crowd shots, atmosphere
12	Hard	72 x 9.3	HW Tripod	Scaffolding at end of finish area	Main Coverage, action, last feature, Awards ceremony.

CAMERA PLANS – EXAMPLE:
EXAMPLES OF RUN DOWN



MULTILATERAL RUNNING ORDER - SKI CROSS EXAMPLE

IN (GMT)	IN (local time: GMT+1)	OUT	DURATION (h.mm.ss)	ON SCREEN	SOURCE	
11:50:00	12:50:00		01:49:40	Start of the International Feed		
OPENING	11:50:00	12:50:00	13:00:00	00:10:00	OPENING SEQUENCE	
		12:50:00	12:51:30	00:01:30	Beauty shots / Warming up	Live
		12:51:30	12:51:50	00:00:20	FIS & INFRONT animation	Tape
		12:51:50	12:52:20	00:00:30	Beauty shots / Title event	Live / Graphics
		12:52:20	12:53:00	00:00:40	Venue Presentation	Tape
		12:53:00	12:54:00	00:01:00	Wide shot: atmosphere at the venue / Event Calendar	Live
		12:54:00	12:54:30	00:00:30	Weather conditions / Course details	Live / Graphics
		12:54:30	12:55:30	00:01:00	Helmet Cam	Tape / Graphics
		12:55:30	12:57:00	00:01:30	Highlights - Best results from the Qualifications (Top 3 Ladies / Men)	Live / Graphics
		12:57:00	12:57:30	00:00:30	Current Men's Ski Cross World Cup Standings	Live / Graphics
		12:57:30	12:58:00	00:00:30	Beauty shots + Men's Start List (32)	Live / Graphics
		12:58:00	12:59:30	00:01:30	Beauty shots + FIS Race Director + TV Director + TV production	Live / Graphics
	12:59:30	13:00:00	00:00:30	Close-ups & warm-ups and Start gate	Live / Graphics	
RACE	12:00:00	13:00:00	14:26:00	01:26:00	RACE SEQUENCE	
		13:00:00	13:26:00	00:26:00	8 men's heats (4 competitors each heat) + slowmos + results	Live / EVS / Graphics
		13:26:00	13:26:05	00:00:05	COMING UP NEXT - Ladies' Quarter Finals	Live / Graphics
		13:26:05	13:26:35	00:00:30	Current Ladies' Ski Cross World Cup Standings (from the third race of the season)	Live / Graphics
		13:26:35	13:26:55	00:00:20	Ladies' Quarter Finals (16)	Live / Graphics
		13:26:55	13:39:55	00:13:00	Ladies' quarter finals (4 heats) + slowmos + results	Live / EVS / Graphics
		13:39:55	13:40:00	00:00:05	COMING UP NEXT - Men's Quarter Finals	Live / Graphics
		13:40:00	13:53:00	00:13:00	Men's quarter finals (4 heats) + slowmos + results	Live / EVS / Graphics
		13:53:00	13:55:30	00:02:30	Info Break: close-ups in the finish area	Live / Graphics
		13:55:30	13:55:40	00:00:10	COMING UP NEXT - Ladies' Semi Finals	Live / Graphics
		13:55:40	14:02:10	00:06:30	Ladies' semi finals (2 heats) + slowmos + results + Title Men's Semi Finals	Live / EVS / Graphics
		14:02:10	14:08:40	00:06:30	Men's semi finals (2 heats) + slowmos + results	Live / EVS / Graphics
		14:08:40	14:11:10	00:02:30	Info Break: close-ups in the finish area	Live / Graphics
		14:11:10	14:11:20	00:00:10	COMING UP NEXT - Ladies' Small Final	Live / Graphics
		14:11:20	14:15:00	00:03:40	Ladies' small final + slowmos + results + COMING UP NEXT - Ladies' Final	Live / EVS / Graphics
		14:15:00	14:18:40	00:03:40	Ladies' final + slowmos + Final Results + COMING UP NEXT - Men's Small Final	Live / EVS / Graphics
		14:18:40	14:22:20	00:03:40	Men's small final + slowmos + results + COMING UP NEXT - Men's Final	Live / EVS / Graphics
		14:22:20	14:26:00	00:03:40	Men's final + slowmos + Final Results	Live / EVS / Graphics
CLOSING	13:26:00	14:26:00	14:39:40	00:13:40	CLOSING SEQUENCE	
		14:26:00	14:27:00	00:01:00	Winners celebration / atmosphere at the venue	Live / Graphics
		14:27:00	14:28:00	00:01:00	Emotional clip	Tape
		14:28:00	14:28:30	00:00:30	World Cup Standings	Live / Graphics
		14:28:30	14:33:30	00:05:00	Podium Ceremony - Ladies (1-4)	Live / Graphics
		14:33:30	14:38:30	00:05:00	Podium Ceremony - Men (1-4)	Live / Graphics
		14:38:30	14:38:50	00:00:20	Beauty shots + Director + TV production	Live / Graphics
		14:38:50	14:39:20	00:00:30	Next World Cup - dates/location	Live / Graphics
	14:39:20	14:39:40	00:00:20	FIS & INFRONT animation	Tape	
13:39:40		14:39:40		Estimated International Feed closing time		

Local Time: GMT + 01:00:00

race sequence - heat by heat

RACE	12:00:00	13:00:00	14:26:00	01:26:00	RACE SEQUENCE	
		13:00:00	13:03:10	00:03:10	Men's 8 finals heat 1 + slowmos + results	Live / EVS / Graphics
		13:03:10	13:06:20	00:03:10	Men's 8 finals heat 2 + slowmos + results	Live / EVS / Graphics
		13:06:20	13:06:30	00:00:10	Progression graphic - Men's Quarter Finals Heat 1	Live / Graphics
		13:06:30	13:09:40	00:03:10	Men's 8 finals heat 3 + slowmos + results	Live / EVS / Graphics
		13:09:40	13:12:50	00:03:10	Men's 8 finals heat 4 + slowmos + results	Live / EVS / Graphics
		13:12:50	13:13:00	00:00:10	Progression graphic - Men's Quarter Finals Heat 2	Live / Graphics
		13:13:00	13:16:10	00:03:10	Men's 8 finals heat 5 + slowmos + results	Live / EVS / Graphics
		13:16:10	13:19:20	00:03:10	Men's 8 finals heat 6 + slowmos + results	Live / EVS / Graphics
		13:19:20	13:19:30	00:00:10	Progression graphic - Men's Quarter Finals Heat 3	Live / Graphics
		13:19:30	13:22:40	00:03:10	Men's 8 finals heat 7 + slowmos + results	Live / EVS / Graphics
		13:22:40	13:25:50	00:03:10	Men's 8 finals heat 8 + slowmos + results	Live / EVS / Graphics
		13:25:50	13:26:00	00:00:10	Progression graphic - Men's Quarter Finals Heat 4	Live / Graphics
		13:26:00	13:26:05	00:00:05	COMING UP NEXT - Ladies' Quarter Finals	Live / Graphics
		13:26:05	13:26:35	00:00:30	Current Ladies' Ski Cross World Cup Standings (from the third race of the season)	Live / Graphics
		13:26:35	13:26:55	00:00:20	Ladies' Quarter Finals List (16)	
		13:26:55	13:30:05	00:03:10	Ladies' quarter finals heat 1 + slowmos + results	Live / EVS / Graphics
		13:30:05	13:33:15	00:03:10	Ladies' quarter finals heat 2 + slowmos + results	Live / EVS / Graphics
		13:33:15	13:33:25	00:00:10	Progression graphic - Ladies' Semi Finals Heat 1	Live / Graphics
		13:33:25	13:36:35	00:03:10	Ladies' quarter finals heat 3 + slowmos + results	Live / EVS / Graphics
		13:36:35	13:39:45	00:03:10	Ladies' quarter finals heat 4 + slowmos + results	Live / EVS / Graphics
		13:39:45	13:39:55	00:00:10	Progression graphic - Ladies' Semi Finals Heat 2	Live / Graphics
		13:39:55	13:40:00	00:00:05	COMING UP NEXT - Men's Quarter Finals	Live / Graphics
		13:40:00	13:43:10	00:03:10	Men's quarter finals heat 1 + slowmos + results	Live / EVS / Graphics
		13:43:10	13:46:20	00:03:10	Men's quarter finals heat 2 + slowmos + results	Live / EVS / Graphics
		13:46:20	13:46:30	00:00:10	Progression graphic - Men's Semi Finals Heat 1	Live / Graphics
		13:46:30	13:49:40	00:03:10	Men's quarter finals heat 3 + slowmos + results	Live / EVS / Graphics
		13:49:40	13:52:50	00:03:10	Men's quarter finals heat 4 + slowmos + results	Live / EVS / Graphics
		13:52:50	13:53:00	00:00:10	Progression graphic - Men's Semi Finals Heat 2	Live / Graphics
		13:53:00	13:55:30	00:02:30	Info Break: close-ups in the finish area	Live / Graphics
		13:55:30	13:55:40	00:00:10	COMING UP NEXT - Ladies' Semi Finals	Live / Graphics
		13:55:30	13:58:40	00:03:10	Ladies' semi finals heat 1 + slowmos + results	Live / EVS / Graphics
		13:58:40	14:01:50	00:03:10	Ladies' semi finals heat 2 + slowmos + results	Live / EVS / Graphics
		14:01:50	14:02:00	00:00:10	Progression graphic - Ladies' Finals + Small Finals	Live / Graphics
		14:02:00	14:02:10	00:00:10	COMING UP NEXT - Men's Semi Finals	Live / Graphics
		14:02:10	14:05:20	00:03:10	Men's semi finals heat 1 + slowmos + results	Live / EVS / Graphics
		14:05:20	14:08:30	00:03:10	Men's semi finals heat 2 + slowmos + results	Live / EVS / Graphics
		14:08:30	14:08:35	00:00:05	Progression graphic - Men's Finals + Semi Finals	Live / Graphics
		14:08:35	14:11:05	00:02:30	Info Break: close-ups in the finish area	Live / Graphics
		14:11:05	14:11:10	00:00:05	COMING UP NEXT - Ladies' Small Final	Live / Graphics
		14:11:10	14:14:50	00:03:40	Ladies' small final + slowmos + Small Final Results + COMING UP NEXT - Ladies' Final	Live / EVS / Graphics
		14:14:50	14:18:30	00:03:40	Ladies' final + slowmos + Final Results + COMING UP NEXT - Men's Small Final	Live / EVS / Graphics
		14:18:30	14:22:10	00:03:40	Men's small final + slowmos + Small Final Results + COMING UP NEXT - Men's Final	Live / EVS / Graphics
		14:22:10	14:25:50	00:03:40	Men's final + slowmos + Final Results	Live / EVS / Graphics
	13:26:00		14:26:00	01:26:00	CLOSING SEQUENCE	



MULTILATERAL RUNNING ORDER - SNOWBOARD CROSS EXAMPLE

	IN (GMT)	IN (local time: GMT+1)	OUT	DURATION (h.mm.ss)	ON SCREEN	SOURCE
	10:50:00	11:50:00			Start of the International Feed	
OPENING	10:50:00	11:50:00	12:00:00	00:10:00	OPENING SEQUENCE	
		11:50:00	11:54:15	00:04:15	Beauty shots	Live
		11:54:15	11:54:38	00:00:23	FIS & Infront animation	Tape
		11:54:38	11:54:53	00:00:15	Beauty shots / Title event	Live / Graphics
		11:54:53	11:55:53	00:01:00	Venue presentation	Tape
		11:55:53	11:56:53	00:01:00	Beauty shots / Title event	Live / Graphics
		11:56:53	11:57:08	00:00:15	Weather conditions / Course details	Live / Graphics
		11:57:08	11:57:53	00:00:45	Beauty shots / atmosphere at the start	Live
		11:57:53	11:58:23	00:00:30	Start List Men 1/8 Finals	Live / Graphics
		11:58:23	11:59:03	00:00:40	FIS Race Director, TV Director and TV production	Live / Graphics
	11:59:03	12:00:00	00:00:57	Close-ups & warm-ups and Start gate	Live	
RACE	11:00:00	12:00:00	13:15:45	01:15:45	RACE SEQUENCE	
		12:00:00	12:20:00	00:20:00	Men 1/8 FINALS 1-8 heat	Live / EVS / Graphics
		12:20:00	12:20:30	00:00:30	Start List 1/4 Finals Ladies	Live / Graphics
		12:20:30	12:30:30	00:10:00	Ladies QUARTERFINALS heat 1-4	Live / EVS / Graphics
		12:30:30	12:31:00	00:00:30	Start List 1/4 Finals Men	Live / Graphics
		12:31:00	12:41:00	00:10:00	Men QUARTERFINALS heat 9-12	Live / EVS / Graphics
		12:41:00	12:41:30	00:00:30	Start List Semifinals Ladies	Live / Graphics
		12:41:30	12:46:30	00:05:00	Ladies SEMIFINALS heat 5 - 6	Live / EVS / Graphics
		12:46:30	12:47:00	00:00:30	Start List Semifinals Men	Live / Graphics
		12:47:00	12:52:00	00:05:00	Men SEMIFINALS heat 13 - 14	Live / EVS / Graphics
		12:52:00	12:54:00	00:02:00	Info break: close-ups in the finish area	Live
		12:54:00	12:54:50	00:00:50	Start List Small Finals Ladies + Athletes presentation (Single graphics with names)	Live / Graphics
		12:54:50	12:57:50	00:03:00	Ladies SMALL FINAL heat 7	Live / EVS / Graphics
		12:57:50	12:58:40	00:00:50	Start List Big Finals Ladies + Athletes presentation (Single graphics with names)	Live / Graphics
		12:58:40	13:01:40	00:03:00	Ladies BIG FINAL heat 8 + Final Results Ladies	Live / EVS / Graphics
		13:01:40	13:03:55	00:02:15	Ladies Winners Celebration + Graphics Winner Ladies	Live / Graphics
		13:03:55	13:05:55	00:02:00	Info break: close-ups in the finish area	Live
		13:05:55	13:06:45	00:00:50	Start List Small Finals Men + Athletes presentation (Single graphics with names)	Live / Graphics
		13:06:45	13:09:45	00:03:00	Men SMALL FINAL heat 15	Live / EVS / Graphics
		13:09:45	13:10:35	00:00:50	Start List Big Finals Men + Athletes presentation (Single graphics with names)	Live / Graphics
	13:10:35	13:13:35	00:03:00	Men BIG FINAL heat 16 + Final Results Men	Live / EVS / Graphics	
	13:13:35	13:15:45	00:02:10	Men Winners Celebration + Graphics Winner Men	Live / Graphics	
CLOSING	12:15:45	13:15:45	13:25:45	00:10:00	CLOSING SEQUENCE	
		13:15:45	13:17:22	00:01:37	Slowmotions / highlights of winners Men + Ladies	EVS / Tape
		13:17:22	13:19:22	00:02:00	Final clip + music	Tape
		13:19:22	13:20:22	00:01:00	World Cup Ranking and Standings	Live / Graphics
		13:20:22	13:25:22	00:05:00	Graphics top three Ladies (3,2,1 + all together) + Podium Ceremony Ladies 3-1	Live / Graphics
		13:25:22	13:30:22	00:05:00	Graphics top three Men (3,2,1 + all together) + Podium Ceremony Men 3-1	Live / Graphics
	13:30:22	13:30:45	00:00:23	FIS & Infront animation	Tape	
	12:30:45	13:30:45			Estimated International Feed closing time	

Local Time: GMT + 01:00:00

Slopestyle - Ski or Snowboard

Key Points to Consider – SLOPESTYLE
Use handheld cameras to be more flexible and to be as close as possible to the action
Consider the camera cutting sequence when positioning the cameras
Consider always the fight for second place.
Capture the atmosphere and enthusiasm of the spectators
Long shots can be used to show the position our relationship between the different competitors on the course
There will be several key points along the course where passing will occur and this usually happens after a long straight flat section coming to a turn
During slomos music background should be appropriate to keep alive the emotion
Be creative, Be innovative, this is freestyle skiing and snowboarding

Slopestyle Camera Description (minimum 10 cameras)

No.	Type	Lens	Mount	Location	Coverage
1	Hand-held	11 x 4.5	N/A	At start	Warming up, getting ready for next run, coach interaction, head and shoulder shot of each competitor, start sequence
2	Hard	72 x 7.6	Tripod	Scaffolding 3 m	Start Structure, 1 st feature
3	Hand-held	72 x 7.6	LW Tripod	2 nd feature	Action
4	Hand-held	72 x 7.6	LW Tripod	3 rd feature	Action
5	Hand-held	72 x 7.6	LW Tripod	4 th feature	Action
6	Hand-held	72 x 7.6	LW Tripod	5 th feature	Action
7	Hand-held	72 x 7.6	LW Tripod	6 th feature	Action
8	Hand-held	72 x 7.6	NA	Finish Area	Competitor coming into finish area and stopping, line up, reaction to scores
9	Hand-held	72 x 7.6	N/A	Exit Gate / Kiss and Cry	Reaction of other competitors to run, exit, crowd shots, atmosphere
10	Hard	72 x 9.3	HW Tripod	Scaffolding at end of finish area	Main Coverage, action, last feature, Awards ceremony.

CAMERA PLANS – EXAMPLE:
EXAMPLES OF RUN DOWN



MULTILATERAL RUNNING ORDER - SLOPESTYLE EXAMPLE

	IN (GMT)	IN (local time: GMT+1)	OUT	DURATION (h.mm.ss)	ON SCREEN	SOURCE
	11:50:00	12:50:00		01:42:20	Start of the International Feed	
OPENING	11:50:00	12:50:00	13:00:00	00:10:00	OPENING SEQUENCE	
		12:50:00	12:53:55	00:03:55	Beauty shots	Live
		12:53:55	12:54:18	00:00:23	FIS & Infront animation	Tape
		12:54:18	12:54:33	00:00:15	Beauty shots / Title event	Live / Graphics
		12:54:33	12:55:33	00:01:00	Venue presentation	Tape
		12:55:33	12:56:33	00:01:00	Beauty shots / Event calendar	Live / Graphics
		12:56:33	12:56:48	00:00:15	Weather conditions / Course details	Live / Graphics
		12:56:48	12:57:33	00:00:45	Beauty shots / atmosphere at the start	Live
		12:57:33	12:58:03	00:00:30	Start List Ladies Run 1	Live / Graphics
		12:58:03	12:59:03	00:01:00	FIS Race Director, TV Director and TV production	Live / Graphics
	12:59:03	13:00:00	00:00:57	Close-ups & warm-ups and Start gate	Live	
RACE	12:00:00	13:00:00	14:17:30	01:17:30	RACE SEQUENCE	
		13:00:00	13:18:00	00:18:00	Ladies 1-12 Run 1	Live / EVS / Graphics
		13:18:00	13:19:00	00:01:00	Slomotions 1st, 2nd and 3rd + Results Run 1 Ladies	EVS / Graphics
		13:19:00	13:19:30	00:00:30	Start List Men Run 1	Live / Graphics
		13:19:30	13:37:30	00:18:00	Men 1-12 Run 1	Live / EVS / Graphics
		13:37:30	13:38:30	00:01:00	Slomotions 1st, 2nd and 3rd + Results Run 1 Men	EVS / Graphics
		13:38:30	13:39:00	00:00:30	Title Ladies Run 2	Live / Graphics
		13:39:00	13:57:00	00:18:00	Ladies 1-12 Run 2	Live / EVS / Graphics
		13:57:00	13:58:00	00:01:00	Slomotions 1st, 2nd and 3rd + Final Results Ladies	EVS / Graphics
		13:58:00	13:58:30	00:00:30	Title Men Run 2	Live / Graphics
	13:58:00	14:16:00	00:18:00	Men 1-12 Run 2	Live / EVS / Graphics	
	14:16:00	14:17:00	00:01:00	Slomotions 1st, 2nd and 3rd + Final Results Men	EVS / Graphics	
CLOSING	13:17:30	14:17:30	14:32:20	00:14:50	CLOSING SEQUENCE	
		14:17:30	14:19:30	00:02:00	Winners celebration + atmosphere at the venue	Live / Graphics
		14:19:30	14:20:35	00:01:05	World Cup Standings	Live / Graphics
		14:20:35	14:21:35	00:01:00	Final clip	Tape
		14:21:35	14:26:35	00:05:00	Race Podium Ladies 3-1	Live / Graphics
		14:26:35	14:31:35	00:05:00	Race Podium Men 3-1	Live / Graphics
		14:31:35	14:31:55	00:00:20	Beauty shots + Director + TV production	Live / Graphics
	14:31:55	14:32:20	00:00:25	FIS & Infront animation	Tape	
	13:32:20		14:32:20	Estimated International Feed closing time		

Local Time: GMT + 01:00:00



MULTILATERAL RUNNING ORDER - SLOPESTYLE EXAMPLE

	IN (GMT)	IN (local time: GMT +1)	OUT	DURATION (h.mm.ss)	ON SCREEN	SOURCE
	11:50:00	12:50:00		01:32:54	Start of the International Feed	
OPENING	11:50:00	12:50:00	13:00:00	00:10:00	OPENING SEQUENCE	
		12:50:00	12:53:50	00:03:50	Beauty shots	Live
		12:53:50	12:54:15	00:00:25	FIS & Infront animation	Tape
		12:54:15	12:54:35	00:00:20	Beauty shots / Title event	Live / Graphics
		12:54:35	12:55:35	00:01:00	Venue presentation	Tape
		12:55:35	12:56:35	00:01:00	Beauty shots / Title event	Live / Graphics
		12:56:35	12:56:50	00:00:15	Weather conditions / Course details	Live / Graphics
		12:56:50	12:57:30	00:00:40	Beauty shots / atmosphere at the start	Live
		12:57:30	12:58:00	00:00:30	Start List Ladies Run 1 (6)	Live / Graphics
		12:58:00	12:59:00	00:01:00	Jury + FIS Race Director, TV Director and TV production	Live / Graphics
	12:59:00	13:00:00	00:01:00	Close-ups & warm-ups and Start gate	Live	
RACE	12:00:00	13:00:00	14:07:30	01:07:30	RACE SEQUENCE	
		13:00:00	13:09:00	00:09:00	Ladies 1-6 Run 1	Live / EVS / Graphics
		13:09:00	13:12:00	00:03:00	Slomotions 1st, 2nd and 3rd + Results Run 1 Ladies	Live / EVS / Graphics
		13:12:00	13:12:30	00:00:30	Start List Men Run 1	Live / Graphics
		13:12:30	13:30:30	00:18:00	Men 1-12 Run 1	Live / EVS / Graphics
		13:30:30	13:33:30	00:03:00	Slomotions 1st, 2nd and 3rd + Results Run 1 Men	Live / EVS / Graphics
		13:33:30	13:34:00	00:00:30	Title Ladies Run 2	Live / Graphics
		13:34:00	13:43:00	00:09:00	Ladies 1-6 Run 2	Live / EVS / Graphics
		13:43:00	13:46:00	00:03:00	Slomotions 1st, 2nd and 3rd + Final Results Ladies	Live / EVS / Graphics
		13:46:00	13:46:30	00:00:30	Title Men Run 2	Live / Graphics
		13:46:00	14:04:00	00:18:00	Men 1-12 Run 2	Live / EVS / Graphics
	14:04:00	14:07:00	00:03:00	Slomotions 1st, 2nd and 3rd + Final Results Men	Live / EVS / Graphics	
CLOSING	13:07:30	14:07:30	14:22:54	00:15:24	CLOSING SEQUENCE	
		14:07:30	14:09:30	00:02:00	Winners celebration + atmosphere at the venue	Live / EVS / Graphics
		14:09:30	14:11:30	00:02:00	World Cup Rankings and Standings	Live / Graphics
		14:11:30	14:12:30	00:01:00	Final clip + music	Tape
		14:12:30	14:17:30	00:05:00	Race Podium Ladies 3-1	Live / Graphics
		14:17:30	14:22:30	00:05:00	Race Podium Men 3-1	Live / Graphics
	14:22:30	14:22:54	00:00:24	FIS & Infront animation	Tape	
	13:22:54		14:22:54	Estimated International Feed closing time		

Local Time: GMT + 01:00:00

AE

2016 FIS FREESTYLE WORLD CUP
Sierra Nevada SPA

FS

as of 24/06/15

Tuesday, February 23, 2016				Arrival		
	Start	Finish	Duration	Event	Location	
AE	12:00	-	20:00	8:00	Arrival + Aerial Team Jump Shaping	Pala Crescendo
	20:00	-	20:30	0:30	Team Captains Meeting / Medical Meeting	Cine Telecabina

Wednesday, February 24, 2016				TRAINING		
	Start	Finish	Duration	Event	Location	
AE	13:00	-	15:30	2:30	Aerial Team Jump Shaping	Pala Crescendo
	17:00	-	17:15	0:15	Aerial Inspection and Speed Checks	
	17:15	-	17:20	0:05	Course Preparation	
	17:20	-	19:05	1:45	Aerial Training Session Group 1	
	19:05	-	19:20	0:15	Aerial Inspection and Speed Checks	
	19:20	-	19:25	0:05	Course Preparation	
	19:25	-	21:10	1:45	Aerial Training Session Group 2	

Thursday, February 25, 2016				TRAINING		
	Start	Finish	Duration	Event	Location	
AE	17:00	-	17:15	0:15	Aerial Inspection and Speed Checks	Pala Crescendo
	17:15	-	17:20	0:05	Course Preparation	
	17:20	-	19:50	2:30	Aerial Training Session Group 2	
	19:50	-	20:05	0:15	Aerial Inspection and Speed Checks	
	20:05	-	20:10	0:05	Course Preparation	
	20:10	-	22:40	2:30	Aerial Training Session Group 1	

Friday, February 26, 2016				TRAINING		
	Start	Finish	Duration	Event	Location	
AE	17:00	-	17:10	0:10	Aerial Inspection and Speed Checks	Pala Crescendo
	17:10	-	17:15	0:05	Course Preparation	
	17:15	-	19:45	2:30	Aerial Training Session Group 1	
	19:45	-	20:00	0:15	Aerial Inspection and Speed Checks	
	20:00	-	20:05	0:05	Course Preparation	
	20:05	-	22:35	2:30	Aerial Training Session Group 2	
	20:30	-	21:00	0:30	Aerial Team Captains Meeting Draw	Cine Telecabina

Saturday, February 27, 2016				COMPETITION			
	Start	Finish	Duration	Event	Location		
AE	12:45	-	12:55	0:10	Ladies' Inspection and Speed Checks	Pala Crescendo	
	12:55	-	13:50	0:55	Ladies' Aerial Training		
	13:50	-	14:05	0:15	Course Preparation and Forerunners		
Qual.	14:05	-	14:30	0:25	Ladies' Qualifications (Q1)(20)		
	14:30	-	14:35	0:05	Course Preparation		
	14:35	-	14:45	0:10	Men's Inspection and Speed Checks		
	14:45	-	16:00	1:15	Men's Aerial Training		
	16:00	-	16:15	0:15	Course Preparation and Forerunners		
	16:15	-	16:50	0:35	Men's Qualifications (Q1)(25)		
	16:50	-	17:35	0:45	Break + Ceremony Rehearsal		
AE	17:35	-	17:45	0:10	Ladies and Men's Aerial Finalist Speed Checks		
	17:45	-	18:45	1:00	Ladies' and Men's Aerial Finalist Training		
	18:45	-	19:00	0:15	Showcase, Course Preparation		
	19:00	-	19:18	0:18	Ladies' Aerial Finals (F1) (12)		
	19:18	-	19:36	0:18	Men's Aerial Finals (F1) (12)		
	19:36	-	19:39	0:03	Break		
	19:39	-	19:49	0:10	Ladies' Aerial Finals (F2) (6)		
	19:49	-	20:00	0:11	Men's Aerial Finals (F2) (6)		
	Final	20:00	-	20:05	0:05	Finish Area Awards Preparation	
		20:05	-	20:10	0:05	Ladies' Aerial Awards	
20:10		-	20:15	0:05	Men's Aerial Awards		
20:15		-	20:20	0:05	Ladies World Cup (Top 3 on WC Standings)		
20:20		-	20:25	0:05	Men's World Cup (Top 3 on WC Standings)		
20:25		-	20:30	0:05	Rookie of the Year Ladies and Men's		
20:30		-	20:40	0:10	Nations Cup AE		
20:40	-	20:45	0:05	FIS Podium Interviews			

Sunday, February 28, 2016

Departure

		Working on the Final Day	
		Date of final:	2/27/2016
		Official Starting time list (local):	19:00
		Location of TCM	Cine Telecabina
Summary of Program			
		Duration of Qualification	4:05
		Duration Ladies Qualification	1:45
		Duration Men's Qualification	2:20
		Duration of Full Final	2:45
		Duration of Competition Final	1:00
		Final and Awards	1:15
		Duration of QL and Final	6:50
		Duration of Awards	0:10
		Duration Competitions QL and FL	2:00
		Ratio Qualification to Final	1.48
Duration Training			
		Session 1	5:00
		Session 2	5:00
		Session 3	5:00
		Ladies Qualification	0:55
		Men's Qualification	1:15
		Training Final	1:00
		All Training Time	18:10
		Ratio Training to Competition	9.083
		Change the date and all other dates change	
		Start Here with the final start time and all other timing in final phase change	
		Add in here the location of TCM	

**2017 FIS Freestyle and Snowboard World Championships
Competition Schedule (Version 4, September 2015)**

Day	-1	0	1	2	3	4	5	6	7	8	9	10	11	12	Day	
Date	Monday 6-March	Tuesday 7-March	Wednesday 8-March	Thursday 9-March	Friday 10-March	Saturday 11-March	Sunday 12-March	Monday 13-March	Tuesday 14-March	Wednesday 15-March	Thursday 16-March	Friday 17-March	Saturday 18-March	Sunday 19-March	Date	
Sunrise	7:41	7:40	7:38	7:37	7:36	7:34	7:33	7:31	7:30	7:28	7:27	7:25	7:24	7:22	Sunrise	
Sunset	19:10	19:11	19:12	19:13	19:14	19:15	19:16	19:17	19:18	19:19	19:20	19:21	19:21	19:22	Sunset	
MO DM	Morning	Training	Training	MO Qual	DM Qual										Morning	MO DM
	Afternoon	Training	Training	MO Final	DM Final										Afternoon	
PGS PSL	Morning							Training	PGS Qual	PSL Qual					Morning	PGS PSL
	Afternoon								PGS Final	PSL Final					Afternoon	
SS SBS	Morning			SBS Training	SBS Men Qual						SS Training	SS Men Qual	SS Training	SS Final	Morning	SS SBS
	Afternoon				SBS Ladies Qual	SBS Training	SBS Final					SBS Ladies Qual			Afternoon	
SBX SX	Morning				SBX Men Training	SBX Men Qual					SX Group 1 Training	SX Group 2 Training	SX Qual		Morning	SBX SX
	Afternoon				SBX Ladies Training	SBX Ladies Qual	SBX Final	SBX Teams			SX Group 2 Training	SX Group 1 Training	SX Final		Afternoon	
HP	Morning				SB Ladies Qual										Morning	HP
	Afternoon			SB Ladies Training	SB Men Training	SB Men Qual				FR Men Training	FR Ladies Qual	FR Men Training			Afternoon	
	Night			SB Men Training	SB Ladies Training		SB HP Final				FR Ladies Training	FR Men Qual	FR Ladies Training	FR HP Final		
AE BA	Afternoon		AE Group 1 Training	AE Group 2 Training											Afternoon	AE BA
	Night		AE Group 2 Training	AE Group 1 Training	AE Qual	AE Final				BA Training	BA Training	BA Qual	BA Final		Night	
			Opening Ceremony												Closing Ceremony	

Sessions	1	3	4	4	4	3	1	2	2	3	4	4	3	1	Sessions
Awards	0	0	1	1	1	2	1	1	1	1	0	1	2	1	Awards
TV cameras	0	0	6	22	12	28	12	12	10	10	12	16	18	10	TV cameras

TV cameras as requested by the FIS Broadcasters Manual (MO=6, Parallel=10, Slopestyle=10, Cross=12, HP=6, AE/BA=6)